

# Models S25 and S50

## 1.7HP, 7 and 14 Gallon Wet/Dry HEPA Vacuums

Wet and dry HEPA vacuum with dual, individually tested and certified HEPA filters, 99.99% at 0.3 microns.

The S25 and S50 have outlets for power tools. The vacuum will start and stop on demand from the power tool. The 7-second delay on the vacuum shut-off ensures that all dust is emptied from the hose. Variable speed on the vacuum motor allows the operator to adjust the amperage and suction power according to circuit breaker capacity.

The S25 and S50 has an automatic filter shaking system. A sensor indicates if a filter is clogged and starts shaking the filter immediately after the vacuum shuts off.

The compact design makes them easy to transport, carry and to store in vans and trucks.

A tool trigger allows ease for the operator, since there is only one cord running to the work area, and the vacuum is automatically turned on and off with use of the tool.



### Features

The S25 has a 7 gallon tank

The S50 has a 14 gallon tank, an ergonomic handle in the chassis and a dump valve. Optional bags can be used for safer and dust-free emptying of the vacuum.

Bags can be used for safer and dust-free emptying of the vacuum.

Lockable front casters

Individually tested and certified Hepa filter

Power tool plug-in feature

Auto start/ stop

Auto filter shaking feature

Unique HEPA filter that can be used for wet pick-up

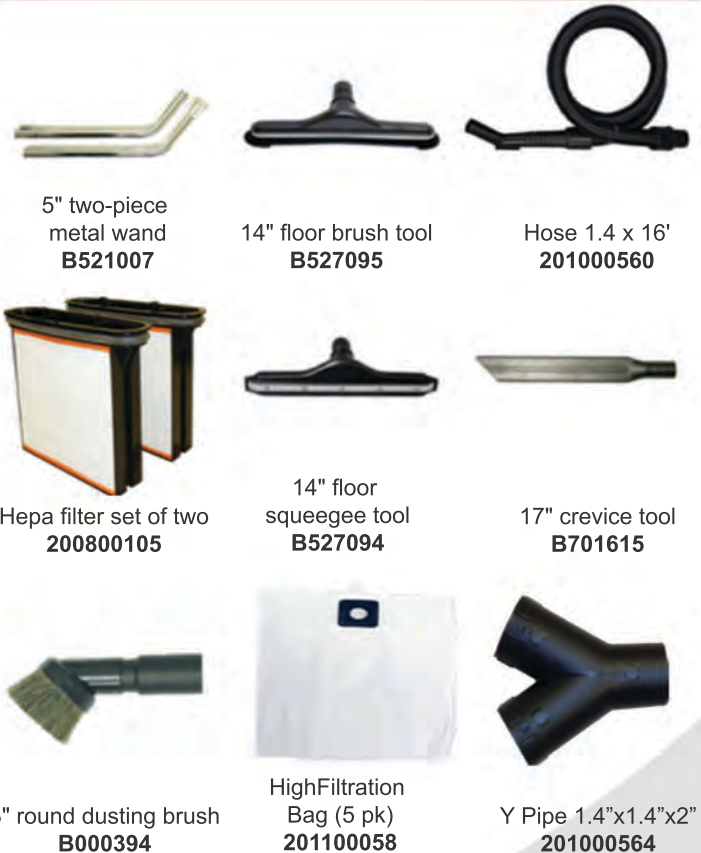
Amperage control

Electronic wet shut off

### Specifications

	Horsepower:	1.7
	Waterlift:	100"
	CFM:	129
	Volts:	120V/230V
<b>S25</b>	Shipping Weight:	39 lbs.
<b>S25</b>	Product Code:	200800018A
<b>S50</b>	Shipping Weight:	55 lbs.
<b>S50</b>	Product Code:	200800094A

### Accessories



5" two-piece metal wand  
B521007

14" floor brush tool  
B527095

Hose 1.4 x 16'  
201000560

Hepa filter set of two  
200800105

14" floor squeegee tool  
B527094

17" crevice tool  
B701615

3" round dusting brush  
B000394

HighFiltration Bag (5 pk)  
201100058

Y Pipe 1.4"x1.4"x2"  
201000564