

# Bonstone Clear Gel Epoxy



## Knifegrade Gel Consistency

Bonstone Clear Gel epoxy is a versatile product which can be used for a wide variety of applications. As a knife-grade epoxy, the consistency of Bonstone Clear Gel allows you to squeeze out thin bond lines, so clamping doesn't produce a mess of displaced adhesive.

### Product Information

- Mix Ratio = 2:1 by volume
- Set Time = 2 hrs @ 75°F
- Transparent and easily polished
- Exceptional strength and durability
- Excellent clarity and easily colorized
- Fast curing
- Holds up through rigorous machining
- Exterior grade epoxy
- Ideal for high humidity or freeze-thaw conditions
- Knife grade (non-sag) viscosity
- Can be tinted with **Touchstone Liquid Tints**

### Applications

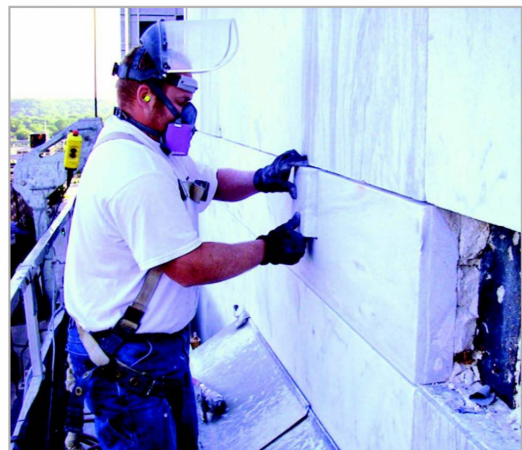
- Re-attaching, mending, repairing and bonding stone
- Anchor bolt adhesive
- Bonding stone to other construction materials
- Vertical/horizontal stone bonding or pinning
- Crack injection



### Available In

- 180ml Cartridge
- 450ml Cartridge
- Quart Kit (2 Qts A / 1 Qt B)
- Gallon Kit (2 Gal A / 1 Gal B)

*We also offer a dual cartridge applicator gun for use with 450 ml cartridges.*



800-425-2214  
info@bonstone.com  
WWW.BONSTONE.COM

# TECHNICAL DATA SHEET

FILE UNDER DIV. 4

## Clear Gel<sup>™</sup>

### Product Description

A two-component, exterior grade, clear epoxy adhesive. Two hour set, gel viscosity.

### Mixed Properties

### Values

Mix ratio

2 part Part A to 1 part Part B by volume

Pot life at 75°F

15 minutes

### Cured Properties

Initial set time at 75°F

2 hours

Full cure time at 75°F

within 24 hours

### **Strengths**

Compressive

8,182 psi

Tensile

2,044 psi

Flexural

9,896 psi

### Test Methods

### Days cured

ASTM D-695

7 days

ASTM D-638

7 days

ASTM D-790

7 days

### **Modulus**

Compressive

106,191 psi

Tensile

458,763 psi

Flexural

536,751 psi

ASTM D-695

7 days

ASTM D-638

7 days

ASTM D-790

7 days

Tensile elongation

1.16%

ASTM D-638

7 days