

Bottom Seal Replacement Procedure

1. Remove the old seal and clean any debris from the groove.
2. Butt the two cut ends of the seal tightly together and insert into the middle of the groove. (See Fig.4)
Note: *Never shorten the seal.*
Seals are cut intentionally longer than their corresponding groove to ensure that the seal will not separate.
3. Tuck the seal into the four corners of the groove ensuring that the excess seal material is evenly distributed around all sides of the groove (see Fig.5).
4. Evenly press the rest of the seal into the groove with your thumb pressing perpendicular to the surface. Do not run your thumb around the seal in one continuous motion as this can result in uneven distribution (see Fig.6).

Note: *Never use adhesives or glues on any of our products.*

All seals are designed to stay in place without an adhesive. Use of adhesives will limit performance and make future seal repair or replacement difficult. Replacement seals are available in a 50' roll or cut to proper length and individually packaged.



Fig.4



Fig.5

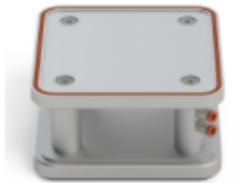


Fig.6