

2020 Best Of Innovation TISE
2018 Best New Product ISFA

NO LIFT INSTALL SYSTEM

"BIG EDDIE" Cart Caddy

FOR USE ON PICKUP TRUCK INSTALL RIGS

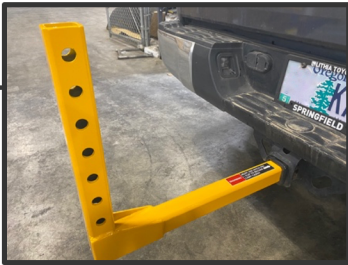
The "BIG EDDIE" includes:

1. Hitch Post (1)
2. Cart Caddy (1)
3. Pins and Clips (2)
4. Receiver Pin and Clip (1)
5. Bolts and Nuts (2 each)



SETTING UP THE "BIG EDDIE"

1. Insert Hitch Post into pickup truck receiver, secure with 5/8" Pin and Clip.



2. Select the height of the Cart Caddy. The bottom of the No Lift wheels should be a minimum of 16" off of the ground. Be sure to measure the 16" after your stone is loaded in the back of your truck (when the hitch is at it's lowest point).



3. Tighten both bolts securely with lock nuts.



WARNING

Do not carry a counter when transporting the "Big Eddie" on the back of your truck.

No Installer Retires Before Their Time.

NoLiftSystem.com

2020 Best Of Innovation TISE
2018 Best New Product ISFA

NO LIFT INSTALL SYSTEM

"BIG EDDIE" Cart Caddy

FOR USE ON PICKUP TRUCK INSTALL RIGS

TRANSPORTING THE NO LIFT ON THE "BIG EDDIE"

1. Roll the No Lift towards the Cart Caddy. Make sure the deck is facing forward and the actuator is facing back.



2. Lock all casters so wheels are facing each other during transport.



3. Set the No Lift into the Cart Caddy. Make sure the actuator bracket is centered in the slot and the cart is resting flat.



4. Secure the No Lift with Pins and Clips.



WARNING

Failure to secure the No Lift with Clips and Pins may result in a lost cart and unhappy drivers who run over your No Lift.

5. Always attach the cart cover when transporting.

No Installer Retires Before Their Time.

NoLiftSystem.com