

# The Blue Ripper G2™

## *Rail Saw*

(Blade shown might not ship with saw or be available.)

## *Operation, Safety, and Instruction Manual*

v20181210

TM



## **ΩMEGA DIAMOND, INC.**

10125 OPHIR RD  
NEWCASTLE, CA 95658-9504

1-888-996-4777 (530) 889-8977  
FAX (530) 885-3785

WWW.OMEGADIAMOND.COM

SALES@OMEGADIAMOND.COM

## Operating/Safety Instructions

---

### **IMPORTANT: Read Before Operating Equipment**

To avoid accidents or injury, keep work area clean, well lit, and well ventilated.

Always wear eye, hand, ear, foot and all other appropriate protective apparel when operating saw.

Keep all other people, children, and small farm animals away while operating saw.

Use only properly grounded, GFCI protected electrical outlet. GFCI must be tested every 2 months.

**Warning:** Do NOT turn machine on or off with the GFCI safety switch. Turn machine toggle switch off before resetting the GFCI.

Ensure that the electrical system in your work location meets all codes and regulations prior to operating saw.

Do not modify the plug on the saw or use any adapters between the saw and the electrical outlet.

Do not allow water to run directly on the motor or any other electrical component.

If power cord or any other part of the saw is damaged, discontinue use immediately until damaged parts can be replaced.

Keep saw blade clear of clothing, jewelry, hair, cords, hoses, or any other object while in operation.

Ensure that the saw is switched off (trigger released) before plugging or unplugging it.

Ensure that blade is clamped firmly between flanges and spinning freely prior to operating.

Keep hands on provided handles of the saw and away from the blade while operating.

Never force the saw if it seems to be stuck or if it seems to be moving with difficulty.

Use only blades of correct size and shape. Do not modify blades.

Do not force bolts; most have been assembled with a threadlocking adhesive for safety.

## Operating Instructions

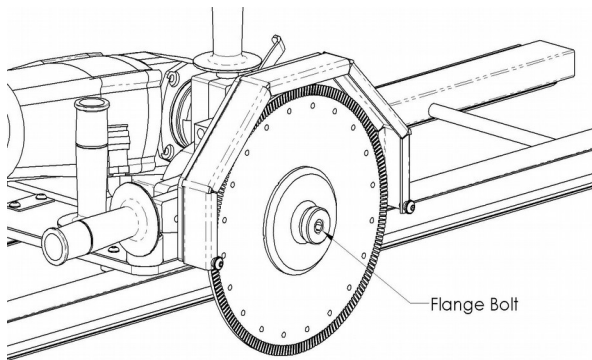
---

### ***Installing/Replacing Blade:***

*Note: This saw is designed for stone and masonry applications exclusively. For optimal performance use only Diamond blades from Omega Diamond that are designed for the material you are cutting.*

Place the saw on the rail (with rail rubber side down) providing clearance for installing the blade. Loosen Vertical Adjustment lock and raise motor to full height.

Remove the right-hand threaded bolt that is holding the flanges and blade to the shaft, by turning counter clockwise. If the bolt is too tight to loosen by hand, use a 8mm Allen wrench to turn it. (To lock the shaft, insert a #2 Philips screw driver through the hole and shaft in the motor mount housing.)



Remove the front flange (and old blade, if applicable) and slide the new blade against the rear flange. Ensure that the blade is flat against the rear flange with rotation direction arrow facing counter-clockwise. Arrow on some blades may be facing the motor or facing out, depending on blade manufacturer (see Spin Direction, pg 6).

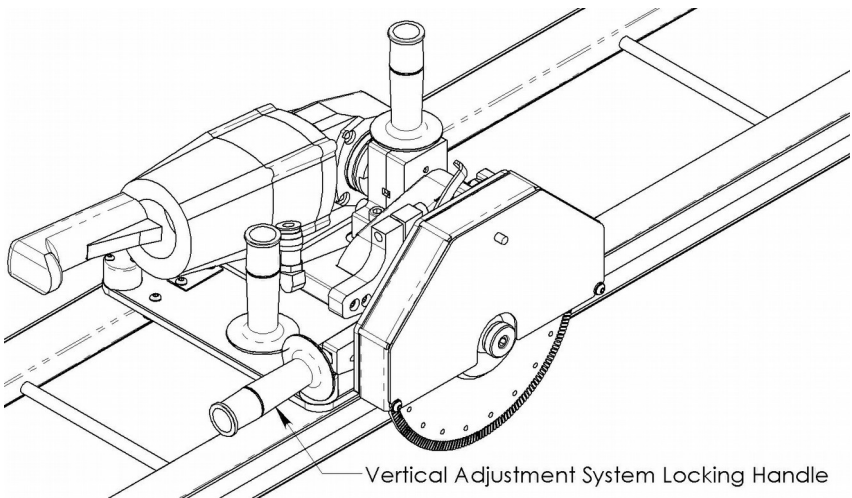
Replace the front flange so the blade is sandwiched between the two flanges. Replace the right-hand threaded bolt and tighten securely by hand.

For more detailed instructions see YouTube video <https://www.youtube.com/watch?v=Jn7QugM0NCg>

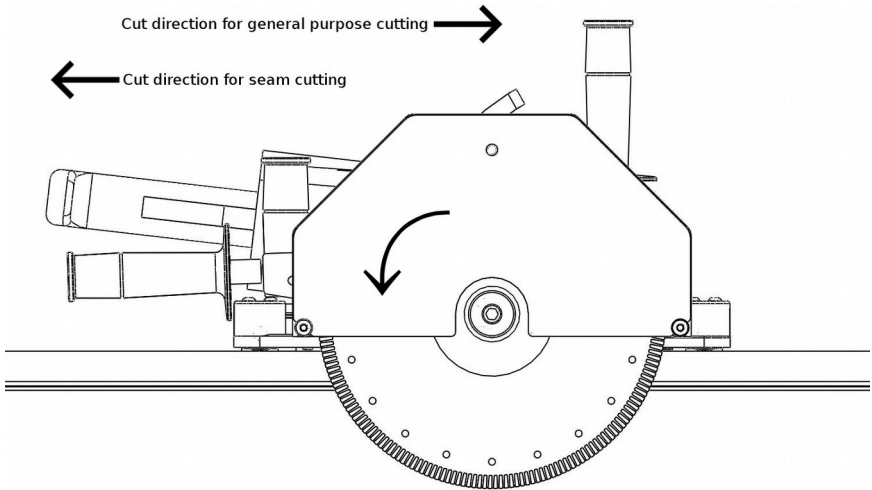
### ***Typical Operation:***

Note: For fastest cutting speeds, it is recommended that you lay your slab on top of a foam sheet at least 1" (3cm) thick. (1.5" (4cm) is preferred for less crumbling). But you can use standard stone cutting tables.

- 1) Lay the rail on the slab along the line to be cut. Note this saw can cut on either side of our rails (it has a 1" offset)
- 2) Allow the rails to overhang enough for the blade to clear the stone where you will begin your cut. It may be necessary to clamp the rails to the stone to prevent wandering. Clamp onto provided angle bolted to one side of rail.
- 3) Turn the water valve on and adjust desired flow.
- 4) Turn saw on before blade touches the stone. Do not stand directly in front of or behind the blade while cutting.
- 5) Unlock and lower blade to desired cut depth by rotating the vertical adjustment system locking handle counter-clockwise then lock the saw height by rotating the same handle clockwise



6) Begin your cut by slowly pushing the saw into the stone. Note the G2 will cut in both directions but cutting from left to right will reduce lifting forces. When seam cutting, cut from right to left (climb cutting). This will reduce surfaces chipping.



7) Note: Step cutting has less chance of saw cut wandering in the cut.

8) Once you have initiated the cut you must not go too slow or the diamonds on the blade will glaze over, and the cutting speed will drop dramatically.

9) **Example:** On a 2 cm thick slab of Absolute Black granite try to maintain a cutting speed of about 6 FPM (1.8 meter per minute) or faster.

## Troubleshooting

---

### ***Blade seems to be cutting slowly or not cutting at all?***

**Suggestions:** Make sure the blade is mounted to spin in the proper direction (See Spin Direction, on guard and on blade).

The material being cut may have “loaded” or “glazed” the diamond. Use a dressing stone or “green stone” to free the diamond. See video on [https://omegadiamond.com/ExposingDiamondSharpenDressBlade\\_Video](https://omegadiamond.com/ExposingDiamondSharpenDressBlade_Video)

### ***Blade binds or “freezes.”***

**Suggestions:** The blade may be cutting at a slight angle. Check alignment. Make sure that the saw is rolling freely on the rails and the rails are not damaged or bent. Make sure that the blade spindle is securely fastened to the mounting plate.

### ***Saw shuts off after a few minutes of use and/or fails to turn on at all.***

**Suggestions:** Check circuit breaker. If that is on and it still fails to start, the motor may have overheated and may need to be replaced.

Also check the brushes in the motor. If these are worn out you can either order them from us, directly from the motor manufacturer, or pick them up from your local hardware store.

### ***Saw grinder motor spins but blade dose not turn.***

**Suggestions:** Check if timing belt is broken. Replace if needed.

If you have any questions please call us toll free:

1 (888) 996-4777

## **Replacement Parts**

---

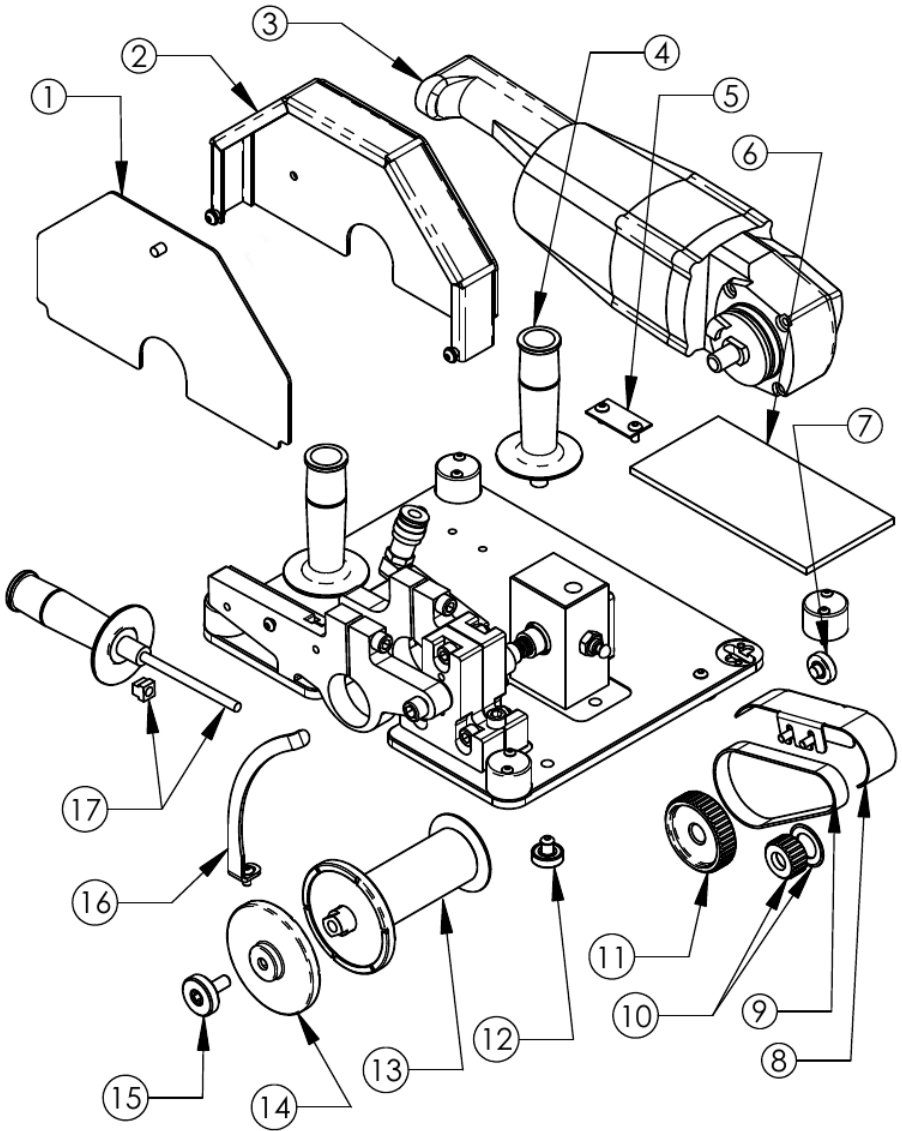
Is your blade worn out? Want a spare? Need extra rail? Visit [www.OmegaDiamond.com](http://www.OmegaDiamond.com) or give us a call and we will be happy to help you with your order.

Toll Free: 1 (888) 996-4777

Fax: 1 (530) 885-3785

Web: [OmegaDiamond.com](http://OmegaDiamond.com)

Email: [sales@omegadiamond.com](mailto:sales@omegadiamond.com)





## Bill of Materials

---

<i><b>Illustration Number</b></i>	<i><b>Part Number</b></i>	<i><b>DESCRIPTION</b></i>	<i><b>QTY</b></i>
1		Front Guard Assembly	1
2		Guard Rim Assembly	1
3	928-295	Makita GA7021 fixed speed angle grinder	1
4			
5		Velcro Anchor with Velcro Included	1
6		Foam Pad	1
7	508-356	Traverse Bearing Assembly	4
8		Belt Guard Assembly	1
9	324-478	Belt	1
10		Motor Pulley with washer	1
11		Spindle Pulley	1
12	214-882	Alignment Bearing Assembly	4
13		Spindle Assembly with Rear Blade Flange	1
14		Front Blade Flange	1
15		Blade Bolt	1
16		Height Adjustment Arm	1
17		Height Adjustment Handle with Threaded Block	1

See [omegadiamond.com/948-421](http://omegadiamond.com/948-421) under Attached Files for the up to date Replacement Parts List.

## **Limited Warranty**

---

For warranty information please visit our web site at [omegadiamond.com/warranty](http://omegadiamond.com/warranty)

Please record the Date of Purchase and the Serial Number of your machine here for future reference:

Date of Purchase:

Serial Number:

## USER NOTES:

---

**NOTICE:** *This product may have been field tested for quality control purposes, so it may have dust or signs of light use.*

## **Blue Ripper Jr Rail Saw Manual**

---

Copyright© 2018 Omega Diamond, Inc.

All Rights Reserved.

### **\*\*\*WARNING\*\*\***

Not following all of these instructions and warnings included in this manual may result in Injury or Death. Omega Diamond, Inc. and all related Companies and personnel cannot be held responsible for any damages incurred by the installation, use, and/or maintenance of this product.

The Blue Ripper, Blue Ripper Jr, Blue Ripper Rail Saw, Blue Ripper Jr Rail Saw and the Omega Diamond Logo are legal trademarks of Omega Diamond, Inc. All Rights Reserved.

**This Document may not be Copied or Distributed, in Part or in Whole, Manually or Digitally, without the written prior Consent of the Copyright Holder , Omega Diamond Inc.**