

**LAVINA®**

# LAVINA® V16E USER MANUAL



Tech Support Line: 800-987-8403 | [www.superabrasive.com](http://www.superabrasive.com) | [info@superabrasive.us](mailto:info@superabrasive.us)



## Warranty Registration Card

Complete and submit this form within 30 days from the date of purchase. The registration is invalid without the machine serial number.

### Section 1: Customer Information

Customer name

Address

City

State and Zip Code

Phone #

Email

### Section 2: Machine Information

LAVINA model

Serial #

Purchase Date

Purchased From (distributor, dealer)

Email: [warranty@superabrasive.us](mailto:warranty@superabrasive.us) / Fax: 706-658-0357  
Superabrasive Inc., 9411 Jackson Trail Rd, Hoschton, GA 30548

# Contents

1. WARRANTY AND RETURNS.....	5
1.1 WARRANTY POLICY FOR LAVINA® V16E .....	5
1.2 RETURN POLICY FOR LAVINA® VACUUMS.....	6
2. GENERAL INFORMATION.....	7
2.1 MANUFACTURER.....	7
2.2 GENERAL DESCRIPTION .....	7
3. MAIN COMPONENTS AND CONTROLS .....	8
4. TECHNICAL DATA.....	9
5. SAFETY PRECAUTIONS.....	10
5.1 RECOMMENDED USE.....	10
5.2 PROHIBITED USE.....	10
5.3 PREPARATION FOR WORK .....	10
5.4 STOP FUNCTIONS .....	10
5.5 SAFE USE.....	10
5.6 BEFORE YOU BEGIN .....	11
5.7 OPERATING THE VACUUM .....	11
5.8 AFTER WORK IS COMPLETED.....	11
5.9 THE WORK AREA.....	11
5.10 PERSONAL PROTECTIVE EQUIPMENT (PPE) .....	11
5.11 OPERATOR .....	11
6. UNPACKING, HANDLING, TRANSPORTATION AND STORAGE .....	13
7. OPERATING WITH THE VACUUM .....	14
7.1 TO START THE VACCUM .....	14
7.2 LOCKING CASTER WHEEL.....	14
7.3 FILTER CHANGE/CLEAN .....	15
8. MAINTENANCE AND INSPECTION .....	16
8.1 LAVINA® V16E ELECTRIC CIRCUIT DIAGRAM.....	17
8.1.1 V16EU/V16E230 .....	17
8.1.2 V16E115.....	18
9. TROUBLESHOOTING .....	19
10. SPARE PARTS .....	20
10.1 GENERAL PARTS.....	20
10.2 VACUUM HEAD COVER.....	22
10.3 CONTROL BOARD .....	24
12. ACCESSORIES .....	25

12.1 INSTALATION OF THE SQUEEGEE TOOL FOR SLURRY.....	26
12.2 SQUEEGEE TOOL FOR SLURRY SPARE PARTS.....	27
13. DISPOSAL .....	28
14. MANUFACTURER'S CONTACTRS.....	28
15. CE-RECERTIFICATION.....	28

# 1. WARRANTY AND RETURNS

## 1.1 WARRANTY POLICY FOR LAVINA® V16E

If your warranty card is missing, contact your local distributor and request a warranty card, or visit us at [www.superabrasive.com](http://www.superabrasive.com) to download one. The customer is responsible for filling out the card and mailing it to the manufacturer's address as indicated on the card. To ensure registration and activation of warranty coverage, the warranty card must be mailed to the manufacturer within 30 days from date of purchase; failure to do so may void the warranty. Be sure to provide the manufacturer with all of the information requested, and most importantly with the distributor's name, machine serial number, and purchase date.

Superabrasive offers a guarantee on LAVINA® vacuums, covering manufacturing and material defects, for a period of 24 months from the date of purchase, as invoiced by Superabrasive. The following conditions pertain to this warranty:

- Applies only to the original owner and is not transferable.
- Vacuum must not be dismantled and tampered with in any way.
- This warranty does not cover any failures or defects caused by normal wear and tear, accidental damage, damage during transport, improper handling, repairs conducted by an unauthorized facility (without prior authorization by Superabrasive), or operation that is not in compliance with the instructions provided in this manual. Superabrasive denies all responsibility for damages or injuries, to any persons or objects, caused by improper operation of the vacuum unit.
- This warranty will become invalid in the event that equipment or accessories used on/with the vacuum unit are not supplied or approved by Superabrasive.
- Covered components proven defective will be repaired or replaced at no charge.
- This warranty does not apply to any repair of/to of proprietary parts, nor does it cover cleaning or general maintenance.
- This warranty does not apply to items with aftermarket alterations, changes, or modifications.
- This warranty is limited to repair or replacement of covered components and reasonable labor expenses.
- In the event of a warranty claim, the vacuum unit must be returned to Superabrasive, or an authorized facility, for a warranty investigation, and subsequent warranty repair or replacement.
- All warranty returns must be shipped freight prepaid.
- This warranty is in lieu of and excludes every condition of warranty not herein expressly set out and all liability for any form of consequential loss or damage is hereby expressly excluded.

The above warranty conditions may be changed only by Superabrasive. Superabrasive reserves the right to inspect and make a final decision on any machine returned under this warranty. This warranty applies to new, used, and demo machines.

Superabrasive agrees to repair or replace, free of charge, any parts which have failed due to manufacturer or material defects. Repairs must only be performed at authorized service facilities that have been approved by Superabrasive. Shipping and handling fees associated with warranty claims must be pre-paid by the customer / claimant.

In the event that a warranty investigation determines that the damage or unit failure is not attributed to manufacturer or material defects, all costs associated with the repair of the vacuum will become the direct responsibility of the claimant. If payment is not rendered for such services, Superabrasive will assume ownership of the machine and any associated parts in possession.

Superabrasive does not authorize any person or representative to make any other warranty, or to assume for us any liability in connection with the sale and operation of our products.

The manufacturer is also not liable in the event that the customer fails to submit a Warranty Certificate, fails to follow manual instructions, uses non-original spare parts, or fails to service/clean the vacuum regularly and properly

## 1.2 RETURN POLICY FOR LAVINA® VACUUMS

LAVINA® Vacuums may be returned, subject to the following terms:

- Vacuums may not be returned to Superabrasive Inc. for credit or repair without prior authorization. Please contact Superabrasive Inc. or your local distributor for authorization and issuance of a return authorization number. This number along with the serial number of the vacuum must be included on all packages and correspondences. Vacuums returned without prior authorization will remain property of the sender and Superabrasive Inc. will not be responsible for these.
- No vacuums will be credited after 90 days from the date of Superabrasive's invoice.
- All returns must be shipped freight prepaid. All returns may be exchanged for other equipment or parts of equal dollar value. If vacuums are not exchanged, they are subject to a fifteen percent (15%) restocking fee.

## 2. GENERAL INFORMATION

This owner's manual is intended for the operator of the Lavina® V16E, the servicing technician as well as for anyone involved with operating or servicing the machine. We recommend that you read the instructions very carefully and follow them strictly. The manual includes information about assembling, using, handling, adjusting and maintaining your Lavina® V16E wet dust collector.

### 2.1 MANUFACTURER

Superabrasive was founded in 1987, as a manufacturer of high quality diamond tools for the stone and concrete industry. Today, Superabrasive is one of the world's leading companies in the production of diamond tools and floor grinding machinery. At Superabrasive, we strive to deliver the very best solutions to our customers, and enable them to work more efficiently.

### 2.2 GENERAL DESCRIPTION

Lavina® V16E dust collector is developed for cleaning of construction area, water cooled drilling machines etc. The vac is equipped with hydrophobic filter, which applies to the M class of filtration. In addition there is a washable mesh sleeve in order to protect the filter from direct contact with water.

If the Lavina® V16E is used for other applications or been used in any other way than explained in this manual, Superabrasive will not take responsibility.

#### **WARNING!**

The dust collector Lavina® V16E is manufactured and fitted for the above-mentioned applications only! Every other use may possess risks to the persons involved.

### 3. MAIN COMPONENTS AND CONTROLS

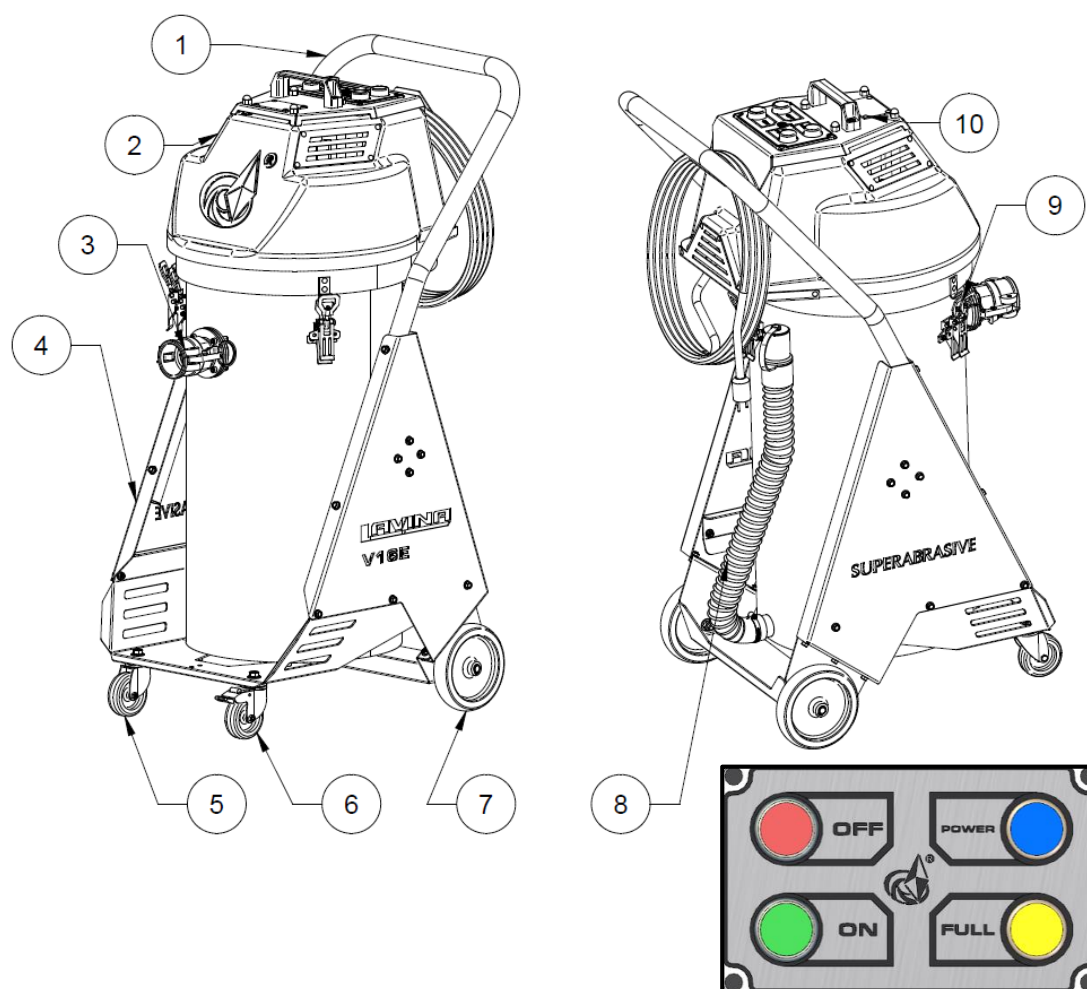


Figure 3

- |                          |  |
|--------------------------|--|
| 1. Handle;               | 9. Latches (3 total);  |
| 2. Vacuum head cover;    | 10. Label with machine data;   |
| 3. Camlock inlet;        | 11. Lamp "POWER" – indicates when the vacuum is plugged to the power supply; |
| 4. Frame;                | 12. Lamp "FULL" – indicates when the vacuum's tank is full of liquid;        |
| 5. Caster wheel;         | 13. ON button – turn the vacuum ON;  |
| 6. Caster locking wheel; | 14. OFF button – turn the vacuum OFF;  |
| 7. Wheel (2 total);      |  |
| 8. Tank drain hose;      |  |

**Label Data** - The data on the label provides the correct kW, weight and dimensions; Weight (needed for transportation purposes); production year and serial number (needed for maintenance purposes).

**Customer Service** - For customer assistance and technical support call your local distributor or call Superabrasive Inc. at 1-800-987-8403 or visit us at [www.superabrasive.com](http://www.superabrasive.com), where you can download a copy of this manual.



## 4. TECHNICAL DATA

Table 4.1

Model version		V16E115	V16E230	V16EU
Voltage/Hz		1phx115V50/60Hz	1phx230V50/60Hz	1phx230V50/60Hz
Power	kW	1	1.2	1.2
	HP	1.3	1.6	1.6
Amperage	Amps	6.5	4.9	4.9
Filter		CYLINDRICAL FILTER		
Filter surface	m <sup>2</sup>	1		
	ft <sup>2</sup>	10.8		
Main hose	mmxm	38x3		
	inxft	1 1/2x3.2		
Motors		1 bypass motor		
Airflow (max)	m <sup>3</sup> /h	160	175	166
	CFM	95	103	98
Vacuum max	bar	0.22	0.22	0.22
	(inchH <sub>2</sub> O)	88	88	88
Tank capacity	Liter	50		
Dimensions (L*W*H)	mm	Ø650x495x1097		
	in	25.6x19.5x43		
Weight	kg	47		
	lbs	104		

## 5.SAFETY PRECAUTIONS

### 5.1 RECOMMENDED USE

The LAVINA® V16E vacuum is designed and manufactured for cleaning of construction area, water-cooled drilling machines etc. This vacuum is rated mainly for wet use but it can also be used in dry. For more information, please contact Superabrasive.

### 5.2 PROHIBITED USE

**The vacuum MUST NOT be used:**

- For applications different from those stated in this manual;
- For collecting non-suitable materials (asbestos or other toxic materials);
- In environments which (1) Possess the risk of explosion, (2) Possess high concentration of powders or oil substances in the air, (3) Possess the risk of fire, (4) Feature inclement conditions, (5) Possess electromagnetic radiation;

### 5.3 PREPARATION FOR WORK

**Ensure that:**

- You have secured the working area, so that no person unfamiliar with operating the vacuum can enter the area;
- Cables damaged through crunching or cracking can be dangerous if used and should be replaced immediately. Risk of personal injury.
- Do not connect the machine to an unearthed socket. Risk of personal injury.
- The machine must not be used in environments where explosive gases can occur. Large risk for explosions.
- The vacuum is not missing parts;
- The vacuum is in an upright, working position;
- All protection devices are working properly;

### 5.4 STOP FUNCTIONS

**Functions for arresting of the machine include following:**

- Stop button;

### 5.5 SAFE USE

The LAVINA® V16E is designed to eliminate all potential risks associated with its use. However, accidents may occur if unskilled or uninstructed workers fail to heed the list of potential risks below:

- Position Risks due to operator's incorrect working position;
- Tangling Risks due to wearing inappropriate working clothes;
- Training Risks due to lack of operational training;

NOTE: Machine operators should follow the instructions in the manual at all times.

RESIDUAL RISKS During normal operating and maintenance cycles, the operator is exposed to some.

## 5.6 BEFORE YOU BEGIN

- The working area must be clear from any debris or objects.
- A first-time operator must always read the manual and heed all safety instructions.
- Perform general daily inspections of the vacuum and inspect the vacuum before each use for any sign of damage.
- Inspect all safety devices.
- The vacuum/filters must be clean and the hose should be connected.

## 5.7 OPERATING THE VACUUM

When operating the LAVINA® V16E, be sure that no one else is within close proximity to the vacuum. Never leave the vacuum unattended while working. The hose must move freely, be damage-free, and should never run beneath the vacuum or machine. Check the floor prior to beginning any work, and ensure that it's not too uneven, which can cause damage to the vacuum.

## 5.8 AFTER WORK IS COMPLETED

When work is complete, clean the vacuum and its surroundings sufficiently, empty all dust / debris, secure the hose, and store the vacuum in a safe and secure place.

## 5.9 THE WORK AREA

Ensure that the area is free of unauthorized people or vehicles, hoses, and always check the floor for debris.

## 5.10 PERSONAL PROTECTIVE EQUIPMENT (PPE)

When operating the machine, always wear safety shoes, ear protectors, safety gloves (especially when changing tools), and suitable clothing. All persons within the immediate working area must wear safety glasses with side shields.

## 5.11 OPERATOR

The operator must be aware of the vacuum's work environment, be properly trained prior to operating the equipment, and fully understand this manual. Only one operator may work with the machine at a single time. The operator must understand and interpret all the drawings and designs in manual, understand all sanitation and safety regulations pertaining to its operation, have floor grinding experience, know how to perform in an emergency situation, and have an adequate technical knowledge.

- The dust collector should only be operated in environments with a temperature between 41°F and 113°F (5°C to 45°C) and a maximum relative humidity of 70%.
- The work environment for the vacuum should be clean, well-lit, and free of combustible elements.
- The dust collector should not be operated without the proper filters installed. This could possibly result in damage to the machine, and cause harm to surrounding personnel.
- Do not open the waste container or motor head assembly while the vacuum is operating.
- Do not vacuum any flammable materials or substances such as fuels, solvents, etc. A dust collector must be specifically designed and labeled for such operation. When grinding epoxy, first ensure that the epoxy is non-toxic.
- Do not vacuum any corrosive substances unless the vacuum is specifically outfitted with containers suitable for this purpose.
- Do not vacuum any burning, smoldering, or hot materials. This could result in a possible explosion and/or damage to the vacuum components.

- If toxic or harmful substances accidentally enter the vacuum cleaner, the container and filters must be removed and cleaned immediately using the proper protective equipment and safety procedures.
- Utilize the locking caster wheel to prevent movement while work is being performed.
- When moving the dust collector, never pull on the vacuum hose. For this purpose, always use the designated handles mounted on the machine.
- For this specific dust collector, sound tests indicate that the emitted noise level is measured at a maximum of 70 decibels (dBA), for a distance of 1 meter from the machine (and height of 1.60 meters). The vibrations emitted from the machine have been measured at a maximum value of 2.5 m/s<sup>2</sup>. • CAUTION: The National Institute for Occupational Safety and Health (NIOSH) recommends that exposure to noise in the working environment be maintained below a level equivalent to 85 dBA for a period of eight hours, in order to minimize occupational, noise induced hearing loss. Any persons working in proximity of the vacuum cleaner should wear the proper hearing protection in order to prevent hearing loss. Please refer to your local laws and regulations for further information on the matter.
- When storing the vacuum, the filter should be removed and cleaned, and the waste container should be emptied of debris. Store the vacuum in temperatures between 32°F and 104°F (0°C and 40°C). Cover the vacuum in order to protect it from accumulating debris and/ or environmental elements.

## 6. UNPACKING, HANDLING, TRANSPORTATION AND STORAGE

**When unpacking the machine, please check that the following accessories are included:**

- The hose end fitting – 1 ½ female camlock and a 1 ½ cuff in the other end;
- Steel wand;
- Floor brush;
- Dust bag – 5 pcs. ;

If any of the above-mentioned parts are missing, please contact your local distributor or our sales representative. Protect the environment: Please dispose of packaging materials and used machine components in an environmentally safe way according to local disposal regulations.



**Figure 6.1**



**Figure 6.2**



**Figure 6.3**

### Attention

When handling and transporting the machine, never use the handles or other machine parts to lift the machine. Use always a skid or pallet for transportation, and never transport an unprotected machine in the rain or snow. Always store and transport the machine in an upright position. The machine should also always be stored in a dry, frost-proof environment.

## 7. OPERATING WITH THE VACUUM

**IMPORTANT:** Before connecting the power cord to the power source, ensure that the electrical voltage corresponds with the requirements identified on the information plate on the vacuum cleaner. Make sure that the flexible vacuum hose is securely attached to vacuum cleaner inlet. Inspect the power cable (and extension cords) for any signs of wear or damage. Replace if necessary.

**CAUTION:** Before switching the dust collector motor “on,” always make ensure that it is at a complete rest before energizing.

### 7.1 TO START THE VACCUM

The vacuum is equipped with two buttons and two lamps. The two buttons respectively have the “ON” and “OFF” functions and the lamps indicate whether the vacuum is connected to the power supply “POWER” or the tank is full of liquid “FULL”.

To start the vacuum 1<sup>st</sup> thing to do is to connect it to the power supply. When you make sure that the lamp mentioned above is glowing just press the “ON” button. To turn it off respectively press the “OFF” button.

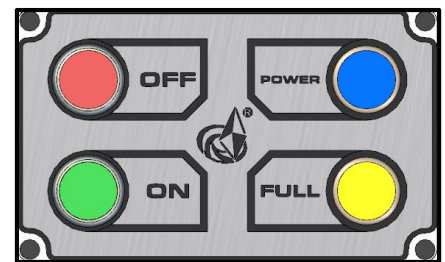


Figure 7.1

The vacuum is equipped with two electrodes, which are also used as a stand for the vacuum head cover. When the liquid in the vac reach the electrodes the motor will stop and the lamp “FULL” will turn on. You must discharge the liquid from the tank and press the “ON” button in order to start the vacuum again and continue your work.

### 7.2 LOCKING CASTER WHEEL

There is one locking caster wheel located on the front of the dust collector. Locking the wheel will prevent the vacuum from moving, and possibly causing damage or injury. The wheel should be locked on uneven surfaces to prevent unexpected rolling or movement. To lock or unlock the caster wheel, follow the procedure shown below.

- To lock the caster wheel, press down on the metal tab
- To unlock the caster wheel, press backwards on the metal tab protruding from the top of the wheel assembly.



Figure 7.2

### 7.3 FILTER CHANGE/CLEAN

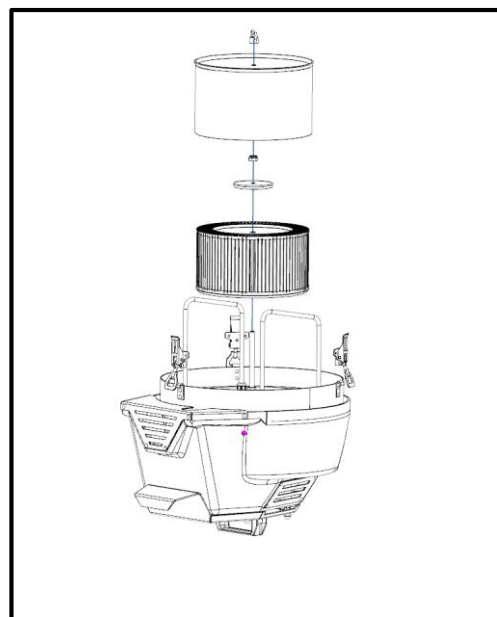
Lavina® V16E doesn't have any filter cleaning system but it's equipped with hydrophobic filter that can be washed. In order to clean the filter you must take it off the vacuum's head cover and clean it manually.

**WARNING:**

1. Turn off the engine and wait for the fan impeller to completely stop before opening the machine to change filters.

**To dismount the filter (fig. 7.3):**

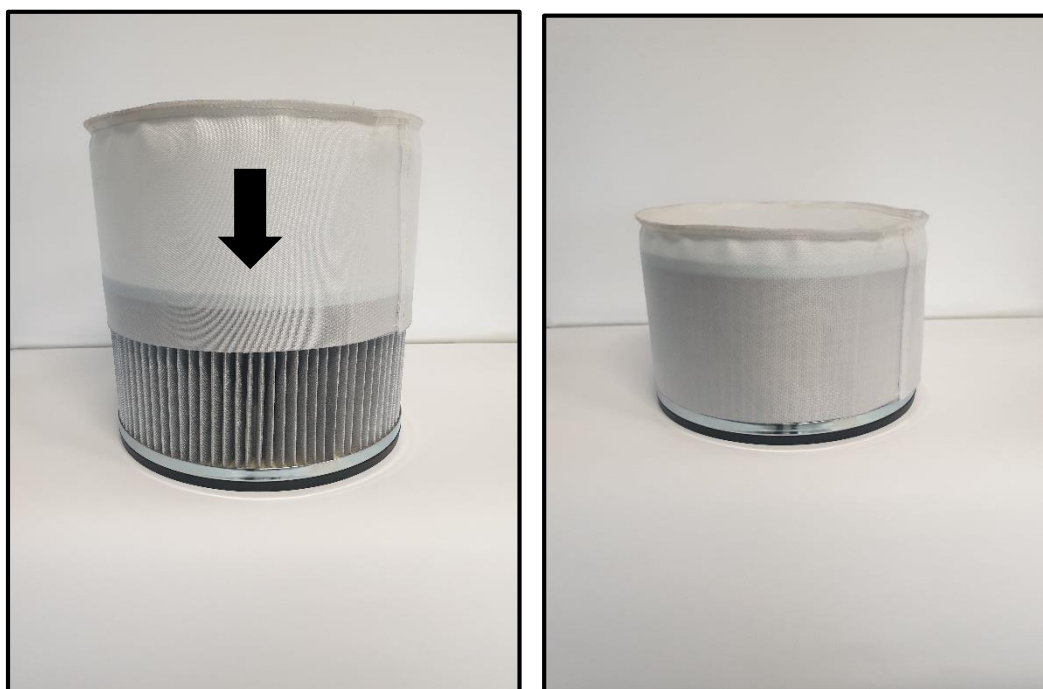
- Open the vacuum's head cover;
- Unscrew the wing nut and remove the protective sleeve.
- Unscrew the nut and take out the filter;
- Replace or clean the filter and mount it back to the vacuum's head cover;



**Figure 7.3**

**IMPORTANT:**

The vacuum is equipped with protective sleeve for the filter. Use it when working on wet in order to keep the filter out from direct contact with water or slurry (fig. 7.3.1). The sleeve is washable and we recommend cleaning it after every job. Make sure to remove the sleeve as working in dry because it will get clogged fast and the dust extractor won't perform well as expected. We recommend using dust bag when working in dry (check the accessories page).



**Figure 7.3.1**

## 8. MAINTENANCE AND INSPECTION

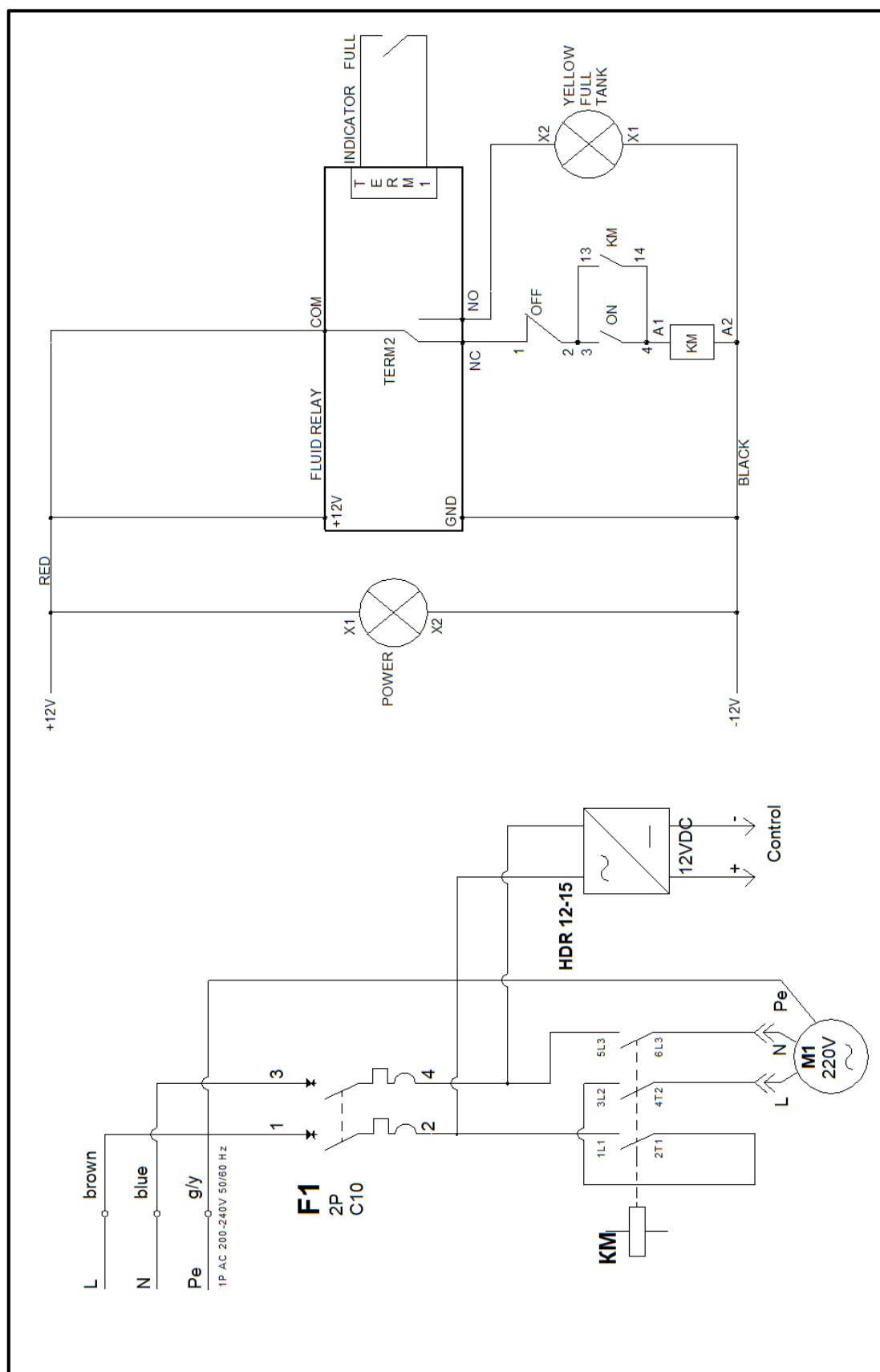
**IMPORTANT:** All of the following procedures must be performed with the vacuum cleaner turned off and the power cable disconnected from the power source. Before performing any work or maintenance on the vacuum cleaner, be sure to wear the proper protective equipment (clothing, eye protection, and/or gloves). In order to ensure safe and efficient operation of the vacuum cleaner, the following procedures should be performed periodically (depending on the frequency of operation):

- Remove and inspect the filters for any signs of excessive wear or damage. Replace as necessary.
- Inspect all electrical components (switches, plugs, cables, etc.) for damage or exposed wiring. Replace as necessary.
- Ensure that all screws, bolts, and nuts are properly tightened.
- Check the waste container level. Clean and empty the container when the debris reaches a maximum of 75% of its full capacity.
- Check the flexible vacuum hose and accessories for significant wear or damage. If holes are present, the vacuum cleaner's efficiency will be reduced, and debris will leak into the work environment.

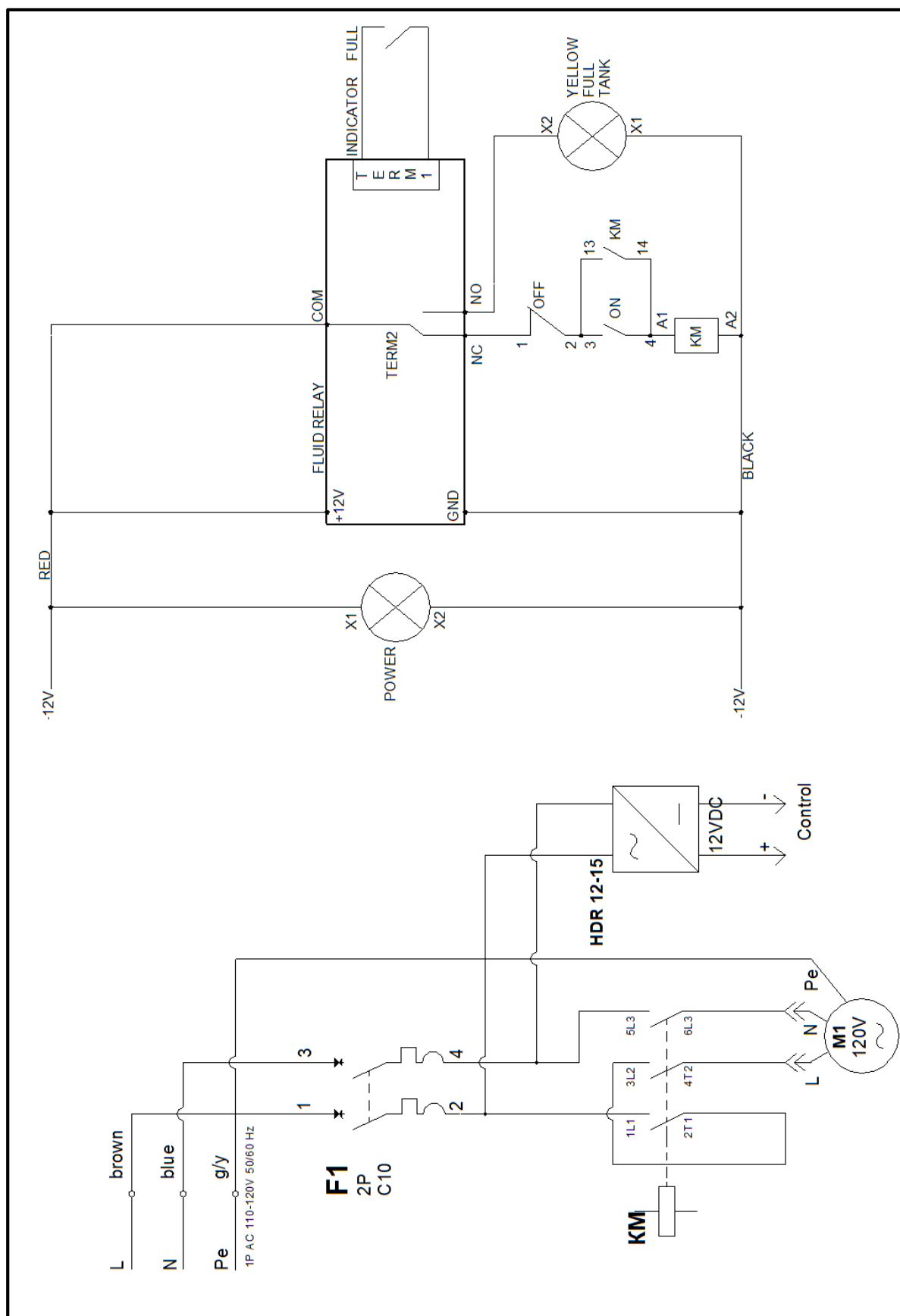


## 8.1 LAVINA® V16E ELECTRIC CIRCUIT DIAGRAM

### 8.1.1 V16EU/V16E230



## 8.1.2 V16E115



## 9. TROUBLESHOOTING

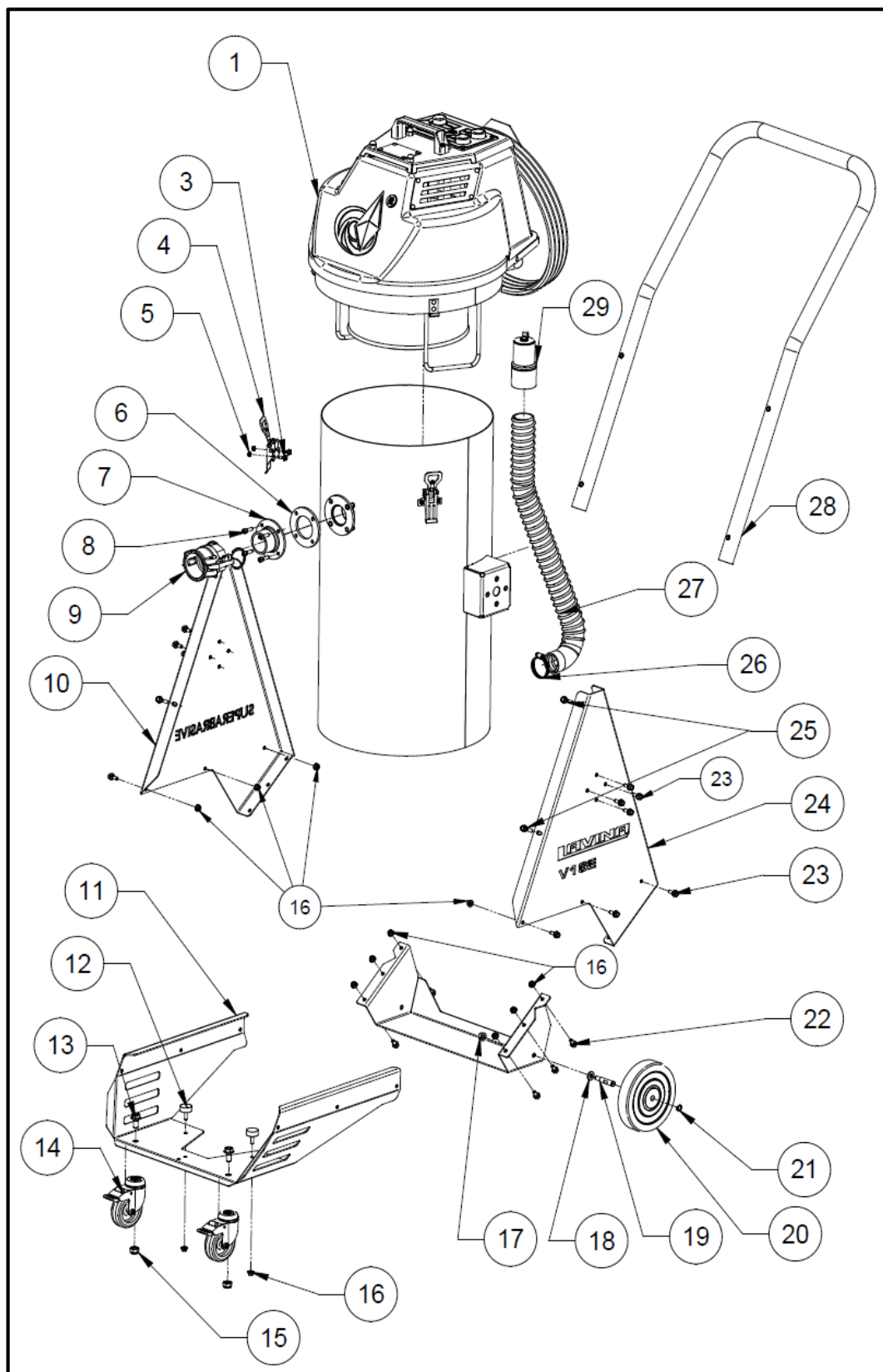
### INDEX OF PROBLEMS AND SOLUTIONS

DUST COLLECTOR ISSUE OR SYMPTOM	POSSIBLE CAUSE	CORRECTIVE ACTION
THE DUST COLLECTOR FAILS TO START OR OPERATE.	THERE IS INSUFFICIENT POWER BEING SUPPLIED TO THE DUST COLLECTOR	CHECK THE ELECTRICAL CABLE, PLUG, AND CONNECTIONS FOR POSSIBLE DAMAGE
	THE ELECTRICAL CIRCUIT BREAKER OR GFI (GROUND FAULT INTERRUPTER) HAS TRIPPED	RESET THE CIRCUIT BREAKER OR GFI DEVICE(S).
WATER IS LEAKING FROM THE DUST COLLECTOR DURING OPERATION.	THERE ARE HOLES OR CRACKS PRESENT IN THE VACUUM HOSE OR TOOLS	CHECK THE VACUUM HOSE AND TOOLS FOR HOLES OR CRACKS. REPLACE IF NECESSARY.
	THERE ARE HOLES PRESENT IN THE FILTER	REMOVE THE FILTER(S) FROM THE VACUUM AND INSPECT FOR HOLES OR TEARS. REPLACE IF NECESSARY.
	THE VACUUM SEALS ARE MISALIGNED OR DAMAGED	MAKE SURE ALL RUBBER AND FOAM SEALS ARE INSTALLED AND ALIGNED PROPERLY. REPLACE IF ANY VISIBLE DAMAGE IS PRESENT.
THE DUST COLLECTOR DOES NOT OPERATE EFFICIENTLY, OR HAS WEAK SUCTION POWER.	THE VACUUM HOSE HAS AN OBSTRUCTION OR HOLES PRESENT	CHECK THE HOSE FOR OBSTRUCTIONS AND CLEAR THEM AS NECESSARY. REPLACE THE HOSE IF VISIBLE HOLES ARE PRESENT.
	THE VACUUM DUST CONTAINER/BAG IS FULL	FOLLOW THE PROCEDURE TO CLEAN THE MAIN FILTER, TURN OFF THE MOTORS AND CLEAN THE DUST COLLECTOR. REPLACE THE LONGOPAC® SECTION OF BAG FILLED WITH DUST AND DEBRIS.
	THE VACUUM FILTER(S) HAS EXCESSIVE BLOCKAGE	CLEAN THE FILTER. REPLACE IF NECESSARY
THE MOTOR(S) IS/ARE MAKING EXCESSIVE NOISE.	THE MOTOR(S) IS DAMAGED	REPLACE THE DAMAGED MOTOR. CONTACT SUPERABRASIVE OR AN AUTHORIZED SERVICE FACILITY

## 10. SPARE PARTS

**Note:** There are three variations of V16E – V16E-115V, V16E-230V and V16EU (European version).

### 10.1 GENERAL PARTS

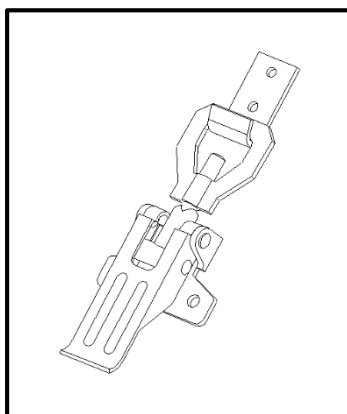


**Figure 10.1**

<b>LAVINA® V16E GENERAL PARTS</b>									
Model	No.	Item No.	Description	Pcs.	Model	No.	Item No.	Description	Pcs.
V16E115	1	V16E11520.00.00	Vacuum head cover	1	ALL	15	30301240092	Nut M10 DIN 985	2
V16E230		V16EU230.00.00			ALL	16	30301240098	Nut M6 DIN 6923	14
V16EU		V16EU20.00.00			ALL	17	30301240095	Nut M8 DIN 6923	2
ALL	2	V16E11.00.00	Tank	1	ALL	18	30301221013	Washer	2
ALL	3	30301210030	Bolt M5x12 DIN 6921	6	ALL	19	V16E00.00.05	Wheel axle	2
ALL	4	30329000040	Latch	3	ALL	20	30312000067	Wheel	2
ALL	5	30301240090	Nut M5 DIN 985	6	ALL	21	30301250048	Circlip DIN 471 10x1 B A2	2
ALL	6	V16E10.00.01	Seal	1	ALL	22	30301210048	Bolt M6x12 DIN 6921	6
ALL	7	V16E10.10.00	CAMLOCK D150 Flange	1	ALL	23	30301210051	Bolt M6x16 DIN 6921	14
ALL	8	30301230150	Screw M6x20 DIN 912	4	ALL	24	V16E00.00.01	Right tank holder	1
ALL	9	30316000118	D150AL	1	ALL	25	30301210101	Bolt M6x45 DIN 6921	4
ALL	10	V16E00.00.02	Left tank holder	1	ALL	26	30308000421	Clamp	1
ALL	11	V16E00.00.03	Front wheel holder	1	ALL	27	V16E00.20.01	Hose	1
ALL	12	30310000010	Buffer	2	ALL	28	V16E00.10.01	Handle	1
ALL	13	30301210033	Bolt M10x20 DIN 6921	2	ALL	29	30308000416	Cuff with cap	1
ALL	14	30312000069	Caster locking wheel	2					

**Note:**

1. The latch set (No 4) contains the clamp and the attaching plate and they can't be ordered separately (fig. 10.2.1).

**Figure 10.2.1**

## 10.2 VACUUM HEAD COVER

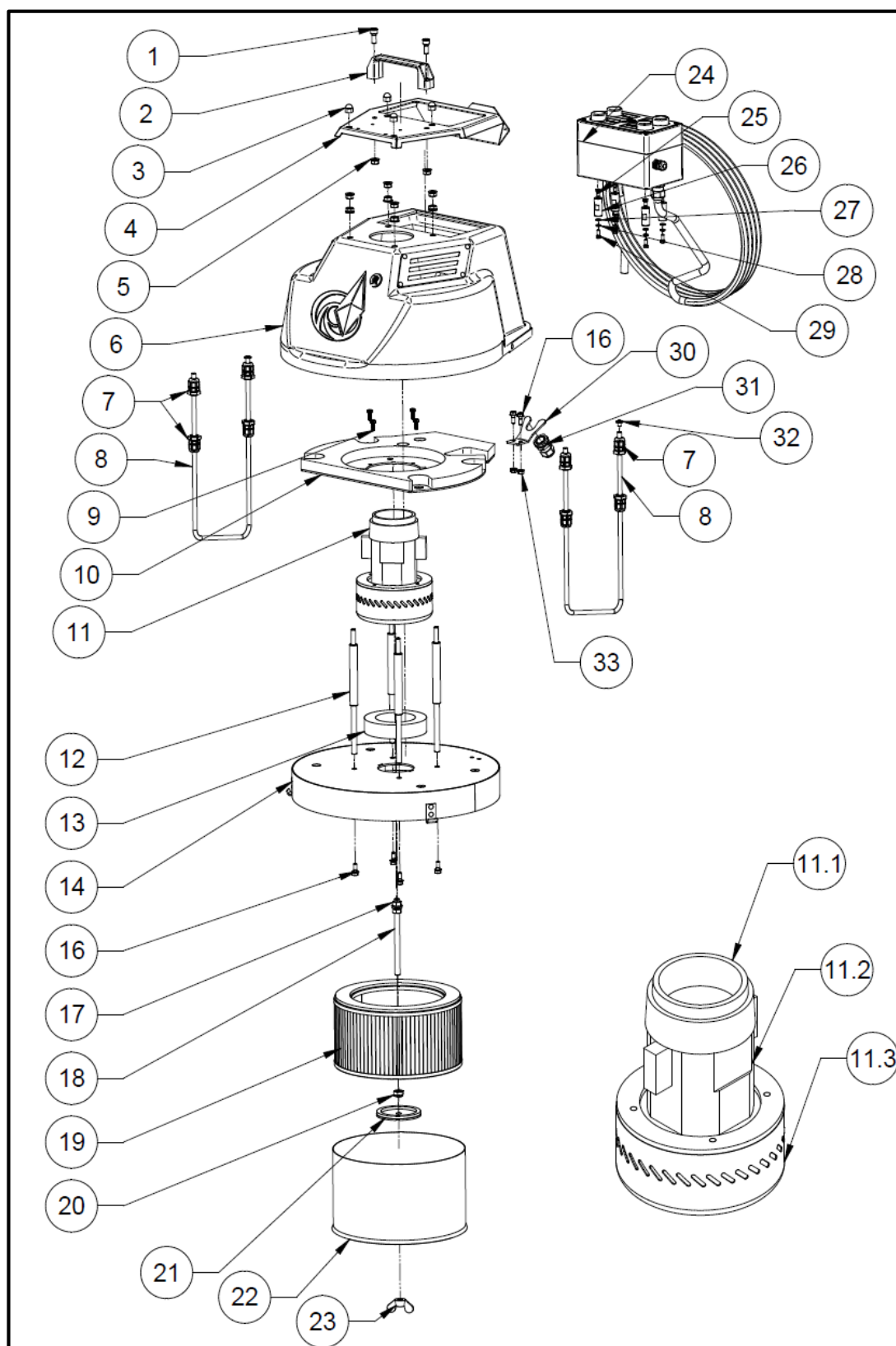
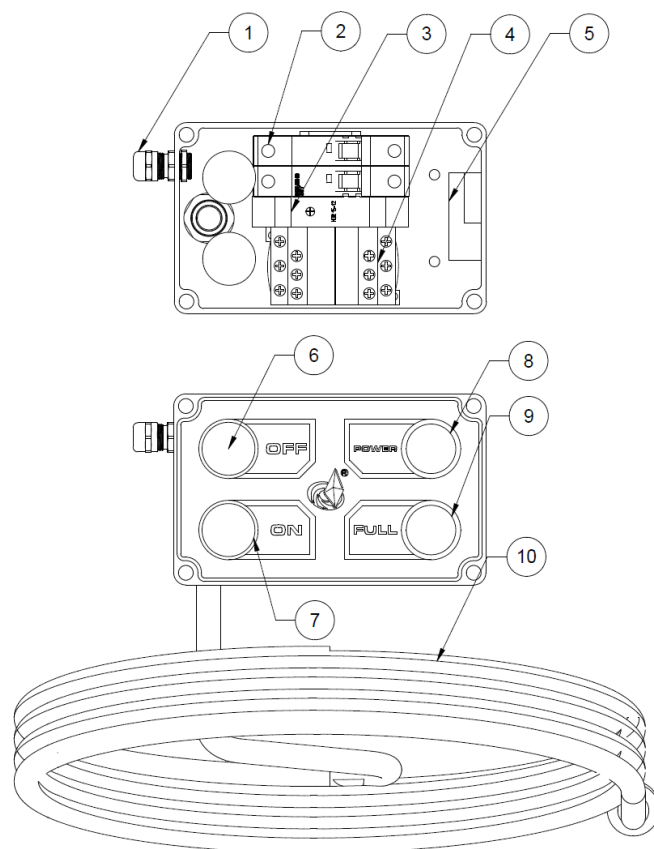


Figure 10.2

<b>LAVINA® V16E VACUUM HEAD COVER</b>					
<b>Model</b>	<b>No.</b>		<b>Item No.</b>	<b>Description</b>	<b>Pcs.</b>
ALL	1		30301230087	Screw M8x20 DIN 912	2
ALL	2		30329000026	Handle	1
ALL	3		30301240112	Nut M8	4
ALL	4		V16E20.00.05	Top cover plate	1
ALL	5		30301240095	Nut M8 DIN 6923	10
ALL	6		V16E20.20.00	Top cover assembly	1
ALL	7		30311000401	Cable gland	8
ALL	8		V16E20.00.03	Electrode	2
ALL	9		30301230232	Screw 4.8x16 DIN 7976	4
ALL	10		V16E20.30.00	Motor base plate	1
V16E115	11		V25E11543.20.00	Vac motor assembly	1
V16E230			V25EU23043.20.00		
V16EU			V25EU23043.20.00		
V16E115	11.1		V25X-30.00.10	Seal	1
V16E230			V20X-30.00.10		
V16EU			V20X-30.00.10		
ALL		11.2	V25E43.20.01	Seal	1
V16E115	11.3		30313000328	Vac motor	1
V16E230			30313000332		
V16EU			30313000332		
ALL	12		V16E20.00.02	Spacer	1
ALL	13		V25X-30.00.08	Seal	1
ALL	14		V16E20.10.00	Vacuum head cover	1
ALL	15		V16E20.10.02	Seal	1
ALL	16		30301210051	Bolt M6x16 DIN 6921	6
ALL	17		30301240084	Nut M10 DIN 6923	2
ALL	18		V16E20.00.04	Stud	1
ALL	19		In accessories list	Filter	1
ALL	20		30301240092	M10 DIN 985	1
ALL	21		V16E20.40.00	Sealing washer	1
ALL	22		In accessories list	Protective sleeve	1
ALL	23		30301240118	M10 DIN 315	1
V16E115	24		V16E11521.00.00	Control board	1
V16E230			V16E23021.00.00		
V16EU			V16EU21.00.00		
ALL	25		30301210007	Bolt M5x10 DIN933	4
ALL	26		V16E21.00.03	Spacer	4
ALL	27		30301221002	Washer	4
ALL	28		30301220021	Spring washer	4
ALL	29		30301210035	Screw DIN933 M5x12	4
ALL	30		V16E20.00.06	Power cable base plate	1
ALL	31		30311000403	Cable gland	1
ALL	32		30301230244	Screw M6x8 ISO 7380F	2
ALL	33		30301240098	Nut M6 DIN 6923	2

### 10.3 CONTROL BOARD



**Figure 10.3**

LAVINA® V16E CONTROL BOARD				
Model	No.	Item No.	Description	Pcs.
ALL	1	30311000401	Cable gland	1
ALL	2	30311000609	Circuit braker	1
ALL	3	30313000077	Power supply	1
ALL	4	30311000177	Contactor	1
ALL	5		Relay	1
ALL	6	30311000700	Button	1
ALL	7	30311000701	Button	1
ALL	8	30311000741	Lamp	1
	9	30311000762	Lamp	1
V16E115	10	V20E11561.20.00	Power cable	1
V16E230		V20E23061.10.00		
V16EU		V20EU61.10.00		



## 12. ACCESSORIES



Figure 12.1



Figure 12.2

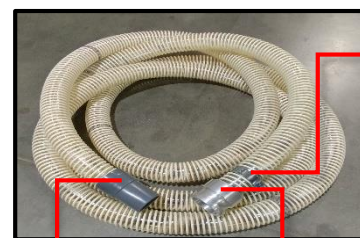


Figure 12.3

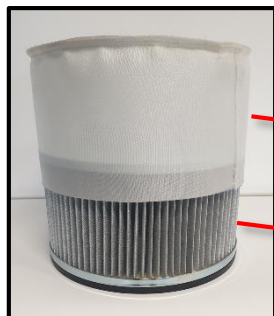


Figure 12.4



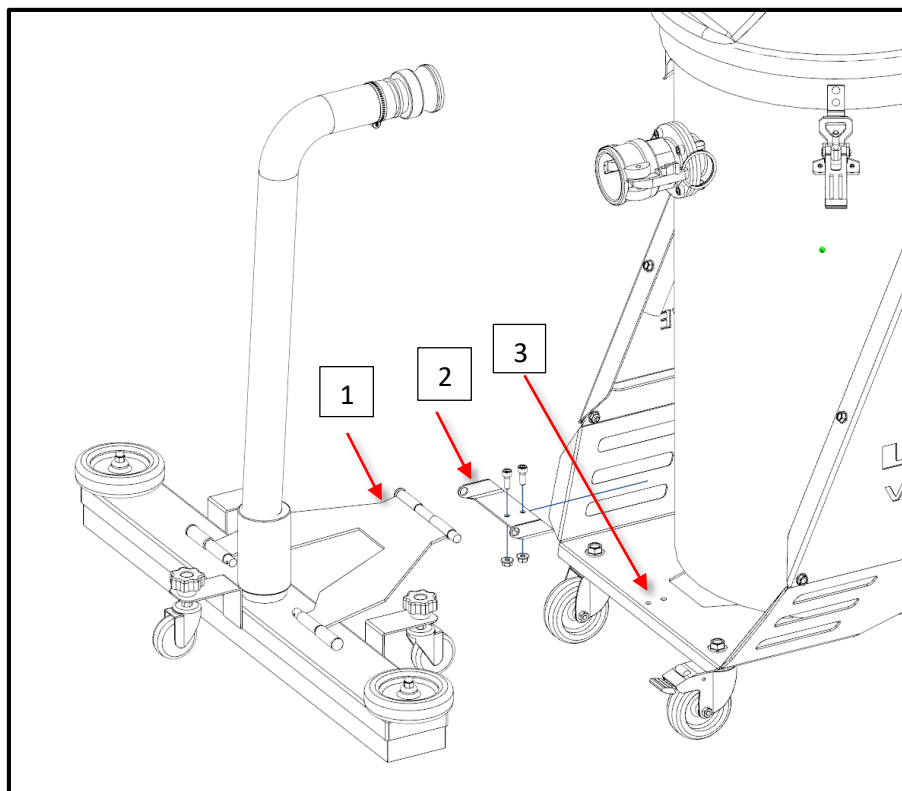
Figure 12.5



Figure 12.6

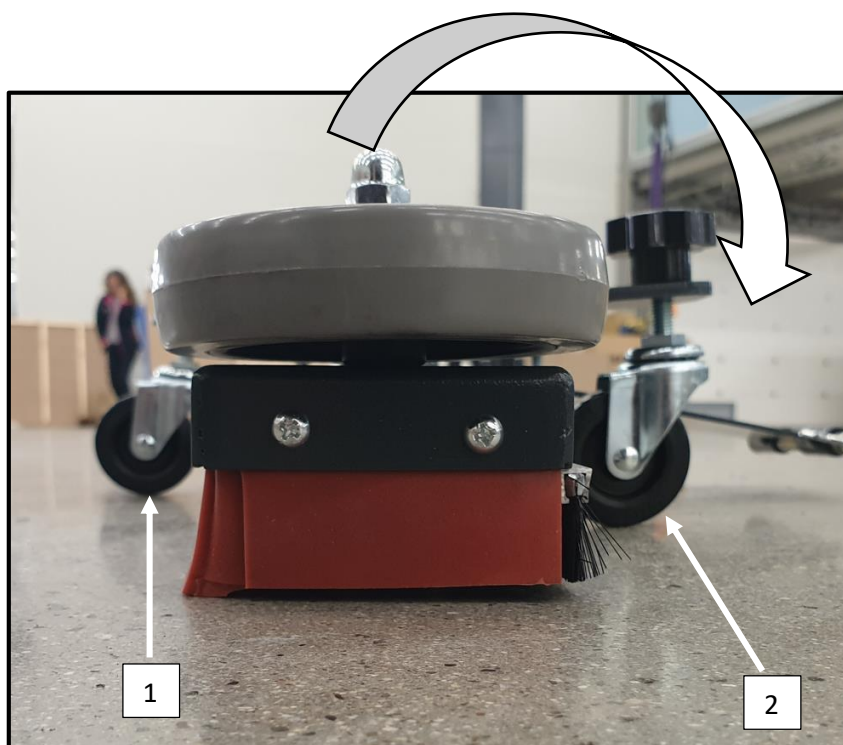
ACCESSORIES					
No.		Item No.	Description	Pcs.	Fig.
1		30310000107	Floor tool combo	1	12.1
2		30316000120	Steel wand	1	12.2
3		V16E50.00.00	Main vacuum hose assembly	1	12.3
	3.1	30308000202	Cuff	1	
	3.2	30316000119	Aluminum camlock fitting E150 AL	1	
	3.3	30308000421	Clamp	1	
	3.4	V16E50.00.01	Vacuum Hose	1	
4.1		30323000230	Protective filter sleeve	1	12.4   4.1
4.2		30323000228	Filter	1	12.4   4.2
5		30350000011	Dust bag	1	12.5
6		V16EA10.00.00	Accessory squeegee tool for slurry	1	12.6

## 12.1 INSTALATION OF THE SQUEEGEE TOOL FOR SLURRY



**Figure 12.1**

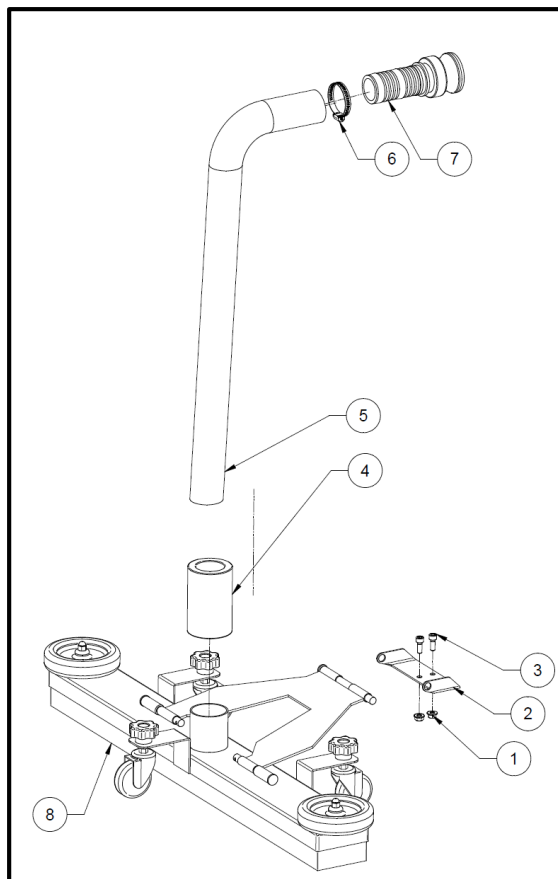
1. Mount the provided plate pos. 2 to the vacuum's frame pos.3;
2. Mount the squeegee tool pos. 1 to the plate pos.2;
3. Connect the squeegee tool to the vacuum's tank by using the provided hose.



**Figure 12.2**

For better suction you must create an angle as shown on fig. 12.2. by adjusting the wheels pos. 1 and 2. Make sure that the brush touches the ground and the front silicone lip is slightly raised from the ground in order to allow the slurry to make it inside the tool and be picked up by the vacuum.

## 12.2 SQUEEGEE TOOL FOR SLURRY SPARE PARTS



**Figure 12.2**

LAVINA® V16E SQUEEGEE TOOL FOR SLURRY				
Model	No.	Item No.	Description	Pcs.
ALL	1	30301240098	Nut M6 DIN 6923	2
ALL	2	V16EA10.00.01	Plate	1
ALL	3	30301230098	Screw M6x16 DIN 912	2
ALL	4	30310000113	Adaptor $\phi 50-\phi 38$	1
ALL	5	V16EA10.00.02	Hose	1
ALL	6	30308000421	Latch	1
ALL	7	30316000119	Aluminum Camlock Fitting E150-AL	1
ALL	8	30310000110	Squeegee tool	1

## 13. DISPOSAL

If your machine after time is not usable or needs to be replaced, send the machine back to Superabrasive or a local distributor, where a professional disposal complying with the environment laws and directives is guaranteed.

## 14. MANUFACTURER'S CONTACTS

If you need to contact Superabrasive Inc. with technical support questions, below is the contact information.

Address USA: 9411 Jackson Trail Road,  
Hoshton GA 30548, USA

Email: [info@superabrasive.us](mailto:info@superabrasive.us)

Tel.: 706 658 1122

Fax: 706 658 0357

Website: [www.superabrasive.com](http://www.superabrasive.com)

Address Europe: Superabrasive Ltd.

Rabotnicheska 2A

BG-6140 Krun

Bulgaria

Email: [factory@superabrasive.com](mailto:factory@superabrasive.com)

Tel.: +359 431 6 44 77

Fax: +359 431 6 44 66

## 15. CE-RECERTIFICATION

All LAVINA® dust collectors are designed to operate correctly in an electromagnetic atmosphere of industrial type, and are equipped with all of the mechanical and electrical safety protections in conformity with the following European CEE rules and regulations:

LAVINA® Vacuums comply with the Safety Directive for machines 2006/42/EC, the EMC Directive 2004/108/EC and the Low Voltage Directive 2006/95/EC.

They also comply with the norms in use UNI EN 13857, CEI EN 60204-1, CEI EN 61000-3-2, CEI EN 61000-3-3, CEI EN 55014.

Test results are a part of the machine's technical information and can be provided upon request. The vacuum unit machine is delivered with the CE mark exposed and is provided with a EC declaration of conformity.