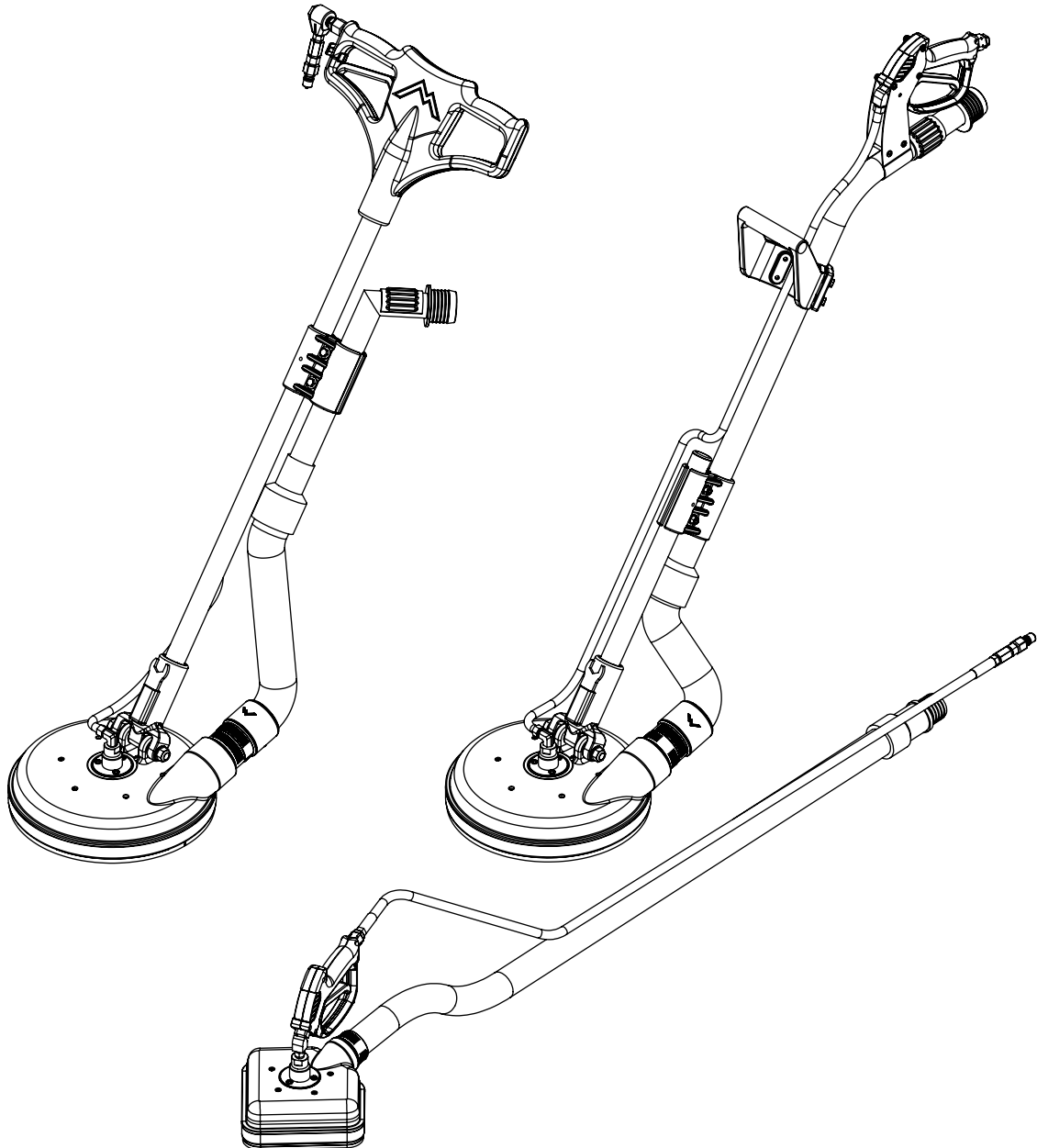


User Manual

Spinners®

Models: 8903, 8904, 8908

REV. 1/31/22



13655 Stowe Dr. Poway, CA 92064

P: (858) 679-1191

F: (858) 726-6005

www.mytee.com

Introduction

Dear Customer:

Congratulations on the purchase of your new Spinner® Tile & Grout Cleaning Tool.

As technology continues to develop you can work confidently knowing that both Mytee and its employees are equally dedicated to developing with the industry and its advances.

Like any other piece of machinery or technology, the Spinner® also requires proper maintenance and care to keep the product working over extended use. Neglecting your machine, abusing it or not operating it properly can void its warranty and prevent the machine from performing to the quality and standard you'd expect out of the Mytee line.

If you have any warranty concerns or questions, please review this manual thoroughly or do not hesitate to contact your distributor. If there are questions regarding maintenance, replacement, or ordering parts please contact an authorized Mytee Service Center. Visit www.mytee.com/support/find-distributors to find your nearest Service Center.

Before using your Mytee product, please read this manual thoroughly.

Sincerely,

Mytee Customer Care Dept.

	Important Safety Information	4
1	At a Glance	6
	1.1 - Technical Specifications	6
	1.2 - 8903 Wand Style Spinner®	7
	1.3 - 8904 T-Handle Spinner®	8
	1.4 - 8908 Counter Spinner®	9
2	Machine Operation	10
	2.1 - Connecting and Extractor or a Truckmount	10
	2.2 - Spinner® Operation	10
	2.3 - Storage	10
3	Product Maintenance	11
	3.1 - Removing the Spray Bar	11
4	Troubleshooting	12

Important Safety Information

Please read and understand this manual completely before operating this machine.

Grounding Instructions

This machine must be grounded. If it should malfunction or break down, grounding provides a path of least resistance for electrical shock. This machine is equipped with a cord having an equipment-grounding conductor and grounding plug. The plug must be plugged into an appropriate outlet that is properly installed in accordance with all local code and ordinances. Do not remove ground pin; if missing, replace plug before use.



DANGER

Improper installation of the equipment-grounding conductor can result in a risk of electric shock. Be sure to check with a qualified electrician or service person if you are in doubt as to whether the outlet is properly grounded. If the plug will not fit in the outlet do not modify the plug or the machine's cord, instead have a proper outlet installed by a qualified technician.

This machine is for use on a nominal 120-volt circuit and with a grounding plug similar to the one in Figure 1 below. If a proper outlet is not available, follow the illustrations of Figure 2 & 3 to install a temporary-grounding plug. This temporary work-around should be used only until a proper outlet (Figure 1) can be installed by a qualified electrician. When and if this type of adapter is employed, screw the adapter's extended tab into place with a metal screw. However, grounding adapters are not approved for use in Canada.

Again, be sure to check the grounding pin for damages and replace if necessary.

The Green, or Green-Yellow, wire in the cord is the grounding wire. When replacing a plug, this wire must be attached to only the grounding pin.

DO NOT use extension cords.

Please Note for America use only.

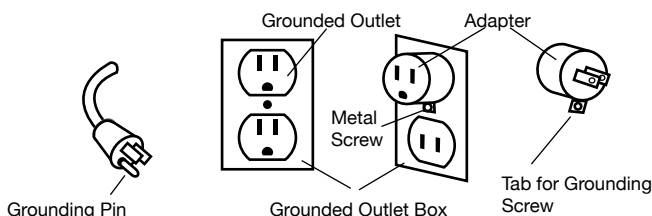


Figure 1

Figure 2

Figure 3

Parts and Service

Please contact Mytee service personnel or a Mytee authorized Service Center using Mytee original replacement parts and accessories if repairs need to be performed. When and if calling Mytee for support, please have your Model and Serial Number available for faster assistance.

Name Plate

The Model and Serial Number are located on the lower half of the back of the machine near the power plug and will be required for ordering replacement parts. You can use the space provided in this manual to note down both for future referencing.

Unpacking the Machine

When your new machine is delivered, please carefully inspect both the shipping carton and the machine for damages. If damage is evident, save both the shipping carton and machine so that the delivering carrier can inspect it. Contact the carrier immediately to file a freight claim if there has been any damage.

Caution and Warnings

Symbols

Mytee uses the symbols below to signal potentially dangerous conditions. Always read this information carefully and take the necessary steps to protect personnel and property.



DANGER

Is used to warn of immediate hazards that will cause severe personal injury or death.



WARNING

Is used to call attention to a situation that could cause severe personal injury.



CAUTION

Is used to call attention to a situation that could cause minor personal injury or damage to the machine or other property. When using an electrical appliance, basic precautions should always be followed, including the following: Read all instructions before using this machine. This product is intended for commercial use only.

To reduce the risk of fire, electrical shock, or injury:

1. Read all instructions before using equipment.

Important Safety Information

- 2.** Use only as described in this manual. Use only manufacturer's recommended attachments.
- 3.** Always unplug power cord from electrical outlet before attempting any adjustments or repairs.
- 4.** Do not unplug by pulling on cord. To unplug, grasp the plug, not the cord.
- 5.** Do not pull or carry by cord. Do not close a door on cord or pull cord around sharp edges or corners.
- 6.** Do not run appliance over cord. Keep cord away from heated surfaces.
- 7.** Do not use with damaged cord or plug. If cord is damaged, repair immediately.
- 8.** Do not use outdoors or on wet surfaces and/or standing water.
- 9.** Always unplug or disconnect the appliance from power supply when not in use.
- 10.** Do not allow to be used as a toy. Close attention is necessary when used by or near children.
- 11.** Do not use in areas where flammable or combustible material may be present.
- 12.** Do not leave the unit exposed to harsh weather elements. Temperatures below freezing may damage components and void warranty.
- 13.** Use only the appropriate handles to move and lift unit. Do not use any other parts of this machine for this purpose.
- 14.** Keep hair, loose clothing, fingers, and all parts of the body away from all openings and moving parts.
- 15.** Use extra care when using on stairs.
- 16.** To reduce the risk of fire or electric shock, do not use this machine with a solid-state speed control device.
- 17.** The voltage and frequency indicated on the name plate must correspond to the wall receptacle supply voltage.
- 18.** When cleaning and servicing the machine, local or national regulations may apply to the safe disposal of liquids which may contain: chemicals, grease, oil, acid, alkalines, or other dangerous liquids.
- 19.** Do not leave operating unattended.

1 - At a Glance

1.1 - Technical Specifications

8903 Wand Style Spinner®

Cleaning Path	12"
Handle	Wand style
Tube Construction	Stainless steel
Tube Diameter	1.5"
PSI Requirement	Tested at 500 PSI, recommend at least 800 PSI for operation.
Swivel	Carbide
Jets	Dual
Jet Size	1502
Brush	12" replaceable
Product Dimensions	12" x 12" x 51.5"

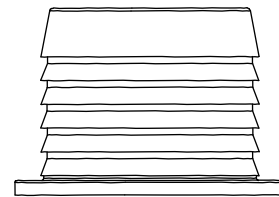
8904 T-Handle Spinner®

Cleaning Path	12"
Handle	T-Handle
Tube Construction	Stainless steel
Tube Diameter	1.5"
PSI Requirement	Tested at 500 PSI, recommend at least 800 PSI for operation.
Swivel	Carbide
Jets	Dual
Jet Size	1502
Brush	12" replaceable
Product Dimensions	19" x 16" x 49"

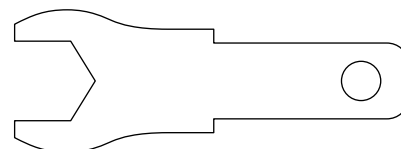
8908 Counter Spinner®

Cleaning Path	7.5"
Handle	Hand tool
Lead Hose Length	43"
PSI Requirement	Tested at 500 PSI, recommend at least 800 PSI for operation.
Swivel	Carbide
Jets	Dual
Jet Size	1502
Brush	6" replaceable
Product Dimensions	11" x 9" x 9"

1.1 - Included with the Spinner®

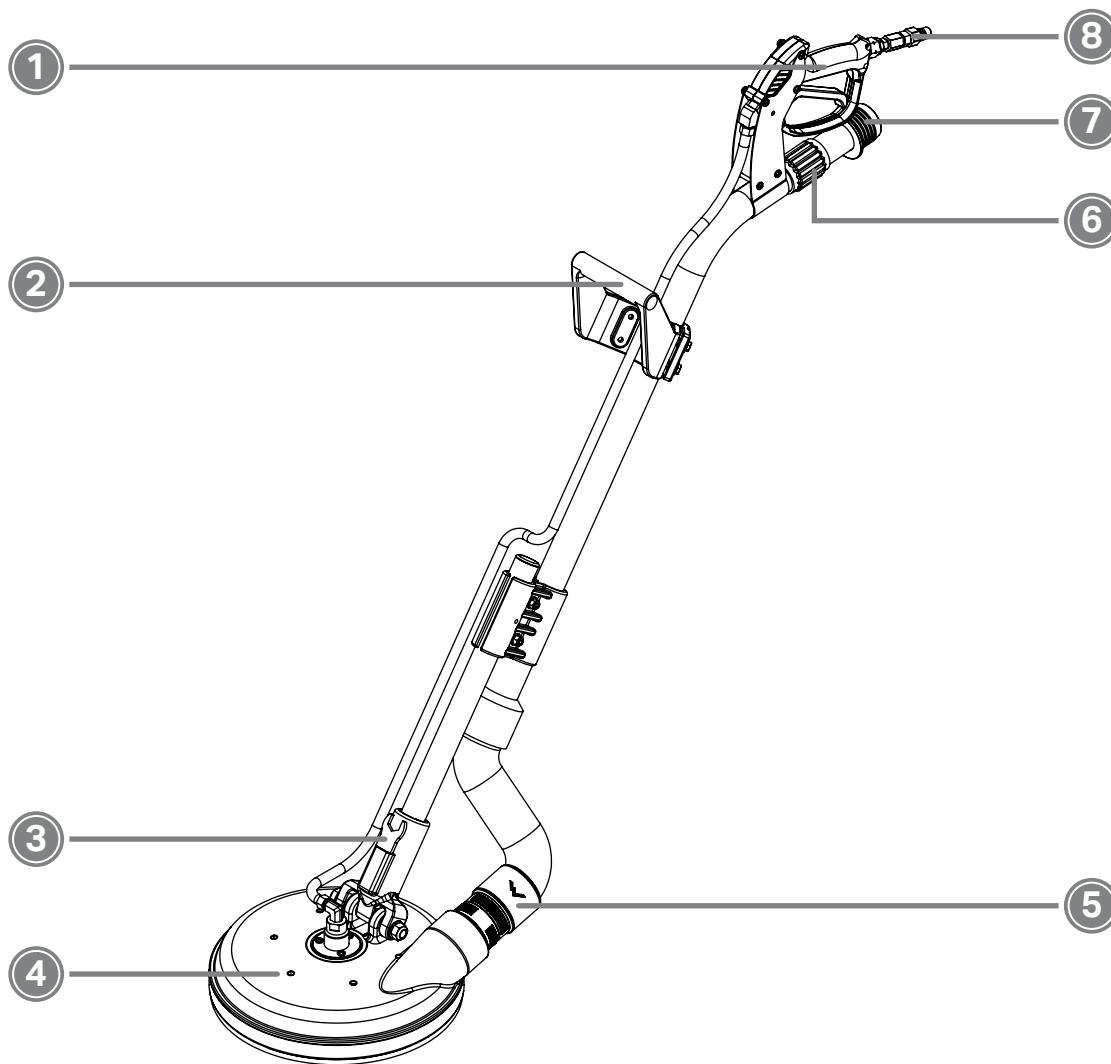


1.5" to 2" Barbed Hose Adapter (with 8903 and 8904 only)



Wrench for Spray Bar Removal (with 8903 and 8904 only)

1.2 - 8903 Wand Style Spinner®

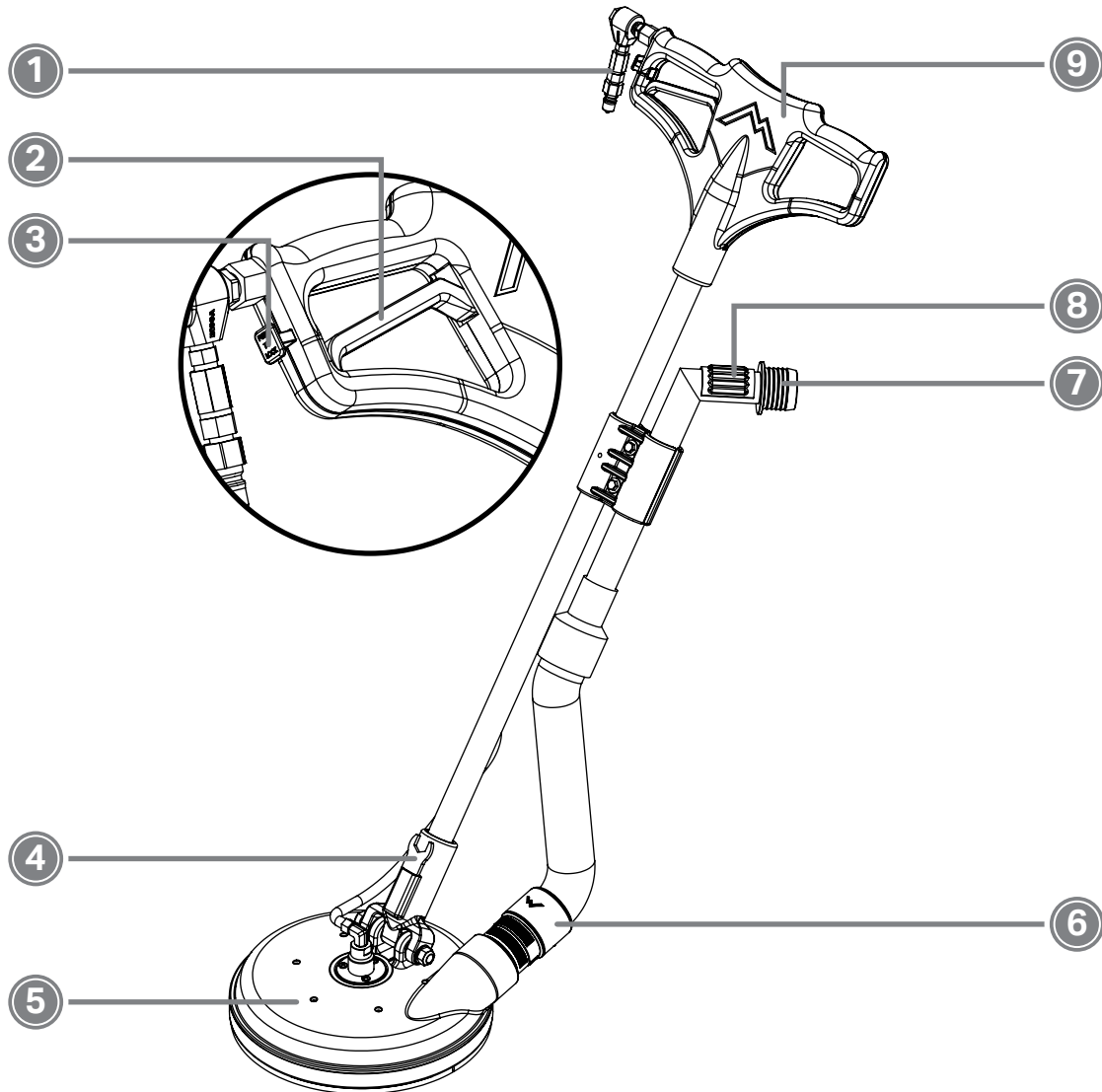


- 1. Spray Handle
- 2. Push Handle
- 3. Spray Bar Removal Wrench Storage
- 4. Cleaning Head

- 5. Cuff-Lynx™ Connection
- 6. Vacuum Relief Valve
- 7. 1.5" to 2" Barbed Hose Adapter
- 8. Quick Connect Fitting for Solution Hose

1 - At a Glance

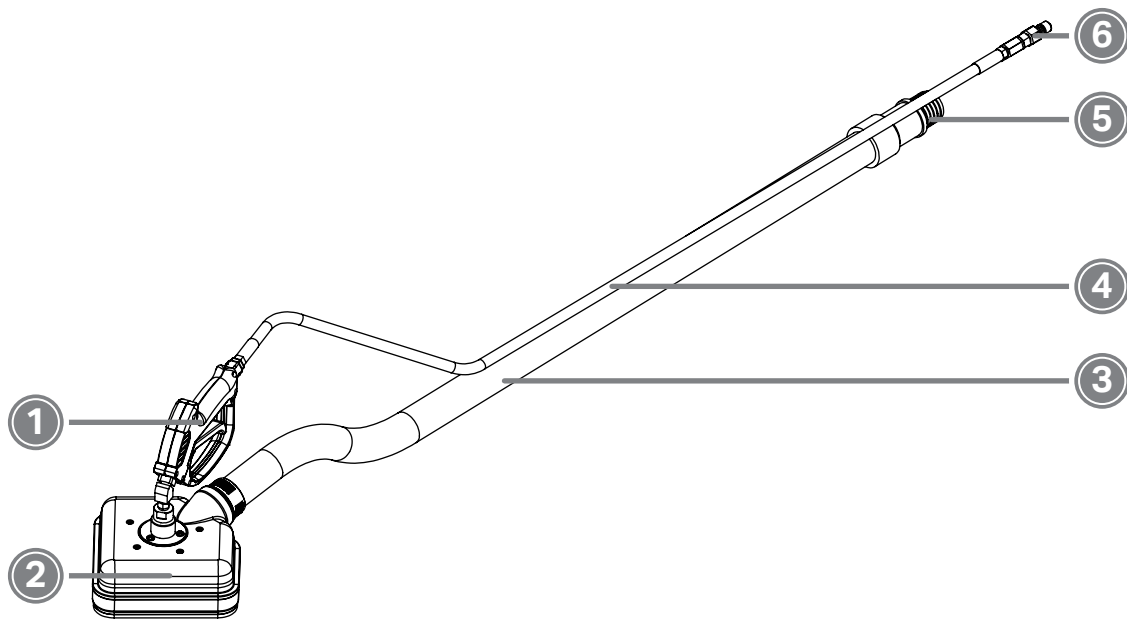
1.3 - 8904 T-Handle Spinner®



- 1. Quick Connect Fitting for Solution Hose
- 2. Trigger Holder Clip
- 3. Spray Trigger
- 4. Spray Bar Removal Wrench Storage
- 5. Cleaning Head

- 6. Cuff-Lynx™ Connection
- 7. 1.5" to 2" Vacuum Hose Adapter
- 8. Vacuum Relief Valve
- 9. T-Handle

1.4 - 8908 Counter Spinner®



- 1. Spray Gun
- 2. Cleaning Head
- 3. Vacuum Hose

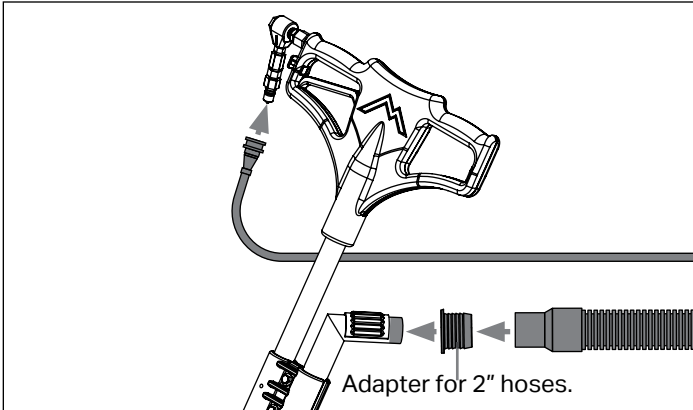
- 4. Solution Hose
- 5. 1.5" Barbed Fitting
- 6. Quick Connect Fitting for Solution Hose

2 - Machine Operation

Before Using the Spinner®:

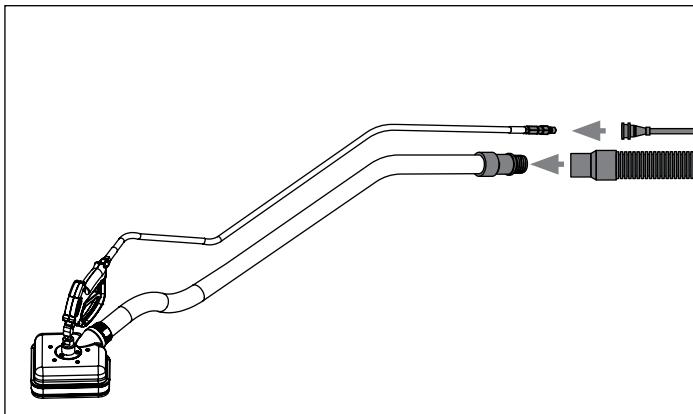
Make sure that the extractor to be used is capable of pumping out solution at a PSI of at least 500.

2.1 - Connecting to an Extractor or a Truckmount



8903 and 8904 Spinner®

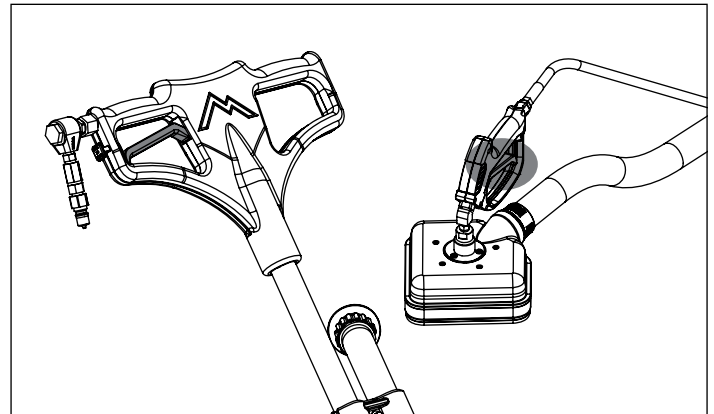
Connect your vacuum hose to the 1.5" vacuum tube. For 2" hoses, use the included 1.5" to 2" barbed adapter. Connect your solution line to the male quick connect fitting.



8908 Counter Spinner®

Connect your vacuum hose to the 1.5" barbed fitting. Connect your solution line to the male quick connect fitting. ♦

2.2 - Spinner® Operation



Switch on your extractor's vacuum(s), pump, and heater (if applicable). See the extractor's user's manual for more information. Begin cleaning. Squeeze the solution trigger to release solution. The force of the solution spraying will propel the spray bar. Perform one wet pass, followed by two dry passes. ♦

2.3 - Storage

After use, make sure all solution is purged from the solution line. Do not expose to freezing temperatures. ♦

3 - Product Maintenance

In order to keep the Spinner operating smoothly and reduce the risk of damage and subsequent downtime, Mytee recommends following the maintenance schedule below:

Maintenance Item	Daily	Weekly
Check for loose hardware.	X	
Clean and inspect hoses.	X	
Clean unit with all-purpose cleaner and cloth.	X	
Inspect spray jets.		X
Use System Maintainer to clear solution line of any mineral buildup.		X

3.1 - Removing the Spray Bar



The 8903 and 8904 Spinners come with a wrench that can be used to remove the spray bar for cleaning, etc. To remove the spray bar, place the wrench on the rotary union nut and then place the wrench handle into the groove. Spin the spray bar counterclockwise to loosen and remove it. ♦

4 - Troubleshooting

Issue	Possible Cause	Solution
The spray bar is not spinning.	Clogged jets.	Unclog the jet by removing and soaking in a vinegar and water solution. Scrub with a soft brush. Repeat if necessary.
	Problem with solution flow from extractor.	Check for any clogs in the solution line. Run System Maintainer through the extractor and Spinner.
	Bad swivel.	Try to spin the spray bar by hand. If it does not move, replace the swivel. If it moves, the seal may need rebuilding. Take the Spinner to the nearest service center.

Notes



Mytee, LLC

13655 Stowe Dr.

Poway, CA 92064

www.mytee.com

© 2022 Mytee, LLC

Printed in the USA