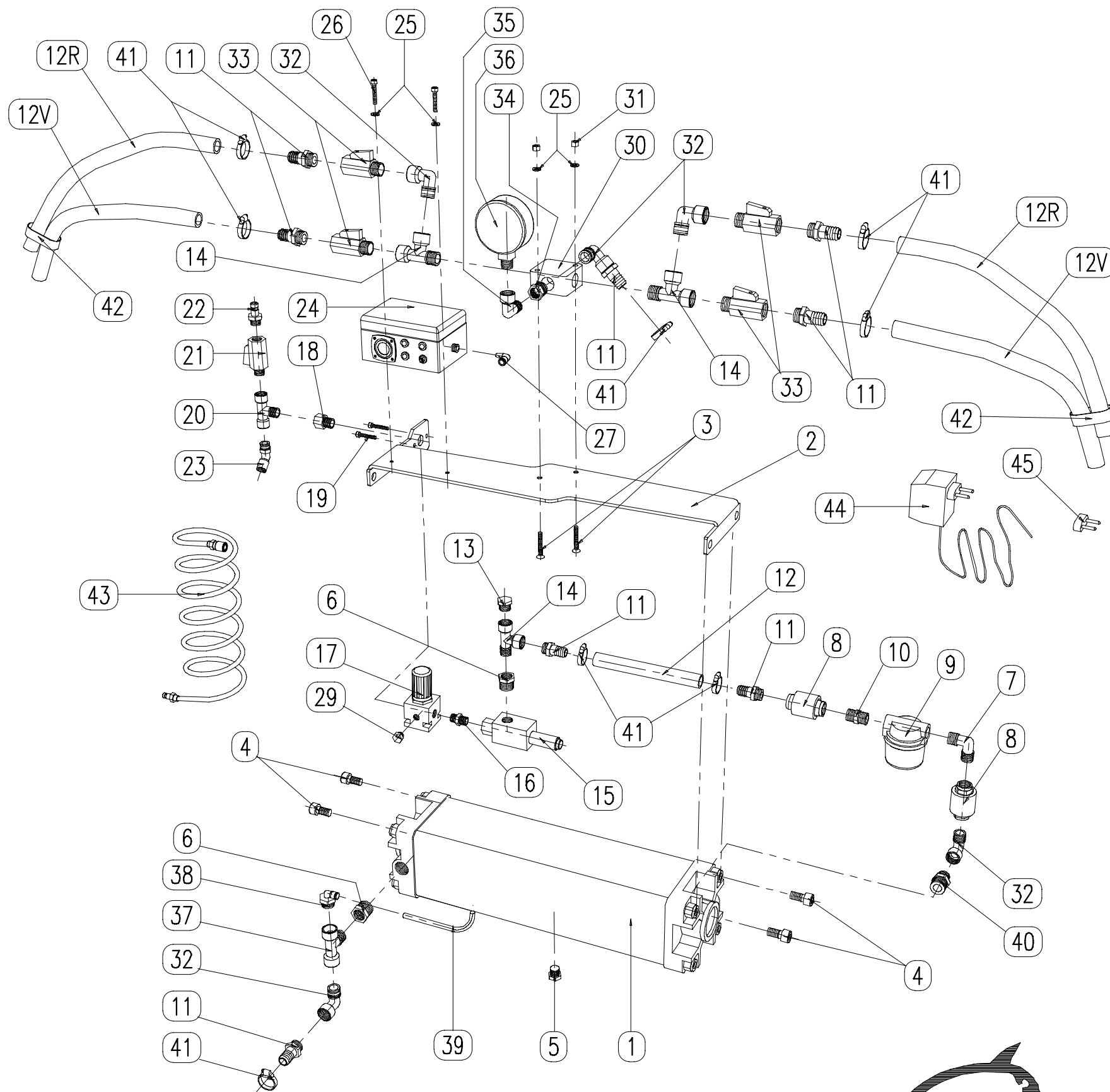


- 1 - 500-600 Kg SUSPENSION
- 2 - INTERNAL ROTATION RING
- 3 - ROTATION LEVER
- 4 - SUPPORTING TUBE
- 5 - M8x70 UNI 5931 - 8.8 ALLEN SCREW
- 6 - ARM AUTOMATIC
- 7 - M16x1.5 AUTOMATIC STOP
- 8T - M20x75 UNI 5737 - 8.8 HEX-HEAD SCREW
FOR VERSION WITH TUBULAR "X" PART
- 8U - M20x35 UNI 5739 - 8.8 HEX-HEAD SCREW
FOR VERSION WITH U-SECTION "X"
- 9T - 21x37 UNI 6592 FLAT WASHER
FOR VERSION WITH TUBULAR "X" PART
- 9U - 20 EYEBOLT SHIM RING
FOR VERSION WITH U-SECTION "X"
- 10 - 20 DIN 582 EYEBOLT
- 11 - 4x40 UNI 6873 ELASTIC PIN
- 12 - M8 KNOB FASTENING PLATE SUPPORT
- 13 - PNEUMATIC CYLINDER
- 14 - Ø20 CYLINDER FASTENING PIN
- 15 - 20 UNI 3653 CIRCLIP
- 16 - STEM FORK SPACER
- 17 - Ø20 STEM FASTENING PIN
- 18 - MANEUVERING HANDLE
- 19 - M8x25 UNI 5739 - 8.8 HEX-HEAD SCREW
- 20 - 8.4x17 UNI 6592 FLAT WASHER
- 21 - M8 UNI 7473 SELF-LOCKING NUT
- 22 - FOUR PLATE SYSTEM
- 22A- CYLINDER CONTROL VALVE
- 22B- SUCKER CONTROL VALVE
- 23 - M10x20 UNI 5931 - 8.8 ALLEN SCREW
- 24 - M4x25 UNI 5931 - 8.8 ALLEN SCREW
- 25 - RIGHT SUCTION PLATE
- 26 - LEFT SUCTION PLATE
- 27 - M6x16 UNI 5931 - 8.8 ALLEN SCREW
- 28 - 40x40 SQUARE PVC PLUG
- 29 - 30x30 SQUARE PVC PLUG
- 30 - PVZ 49x125 Ø25 KNOBS
- 31 - 3x28 STRAP LIFTSTYLE
- 32 - HEXAGONAL KEY GALVANIZED 5 UNI 6573
- 33 - CLIPS 6

- COD. 62000151Z
- COD. 60000018
- COD. 62000154Z
- COD. 60001110Z
- COD. 9400020000008
- COD. 62001420Z
- COD. 9400100000003
- COD. 9400000000003
- COD. 9400010000002
- COD. 9400060000010
- COD. 60000596Z
- COD. 9400400000001
- COD. 9400075000001
- COD. 62000600A
- COD. 60000129Z
- COD. 940007Z000004
- COD. 60000150Z
- COD. 60000149Z
- COD. 62000314Z
- COD. 9400010000004
- COD. 9400060000004
- COD. 9400050000004
- COD. 9400020000028
- COD. 9400020000002
- COD. 9400020000007
- COD. 9400500000002
- COD. 9400500000001
- COD. 9400500000005
- COD. 9300330000001
- COD. 9999999999100
- COD. 9301250000002

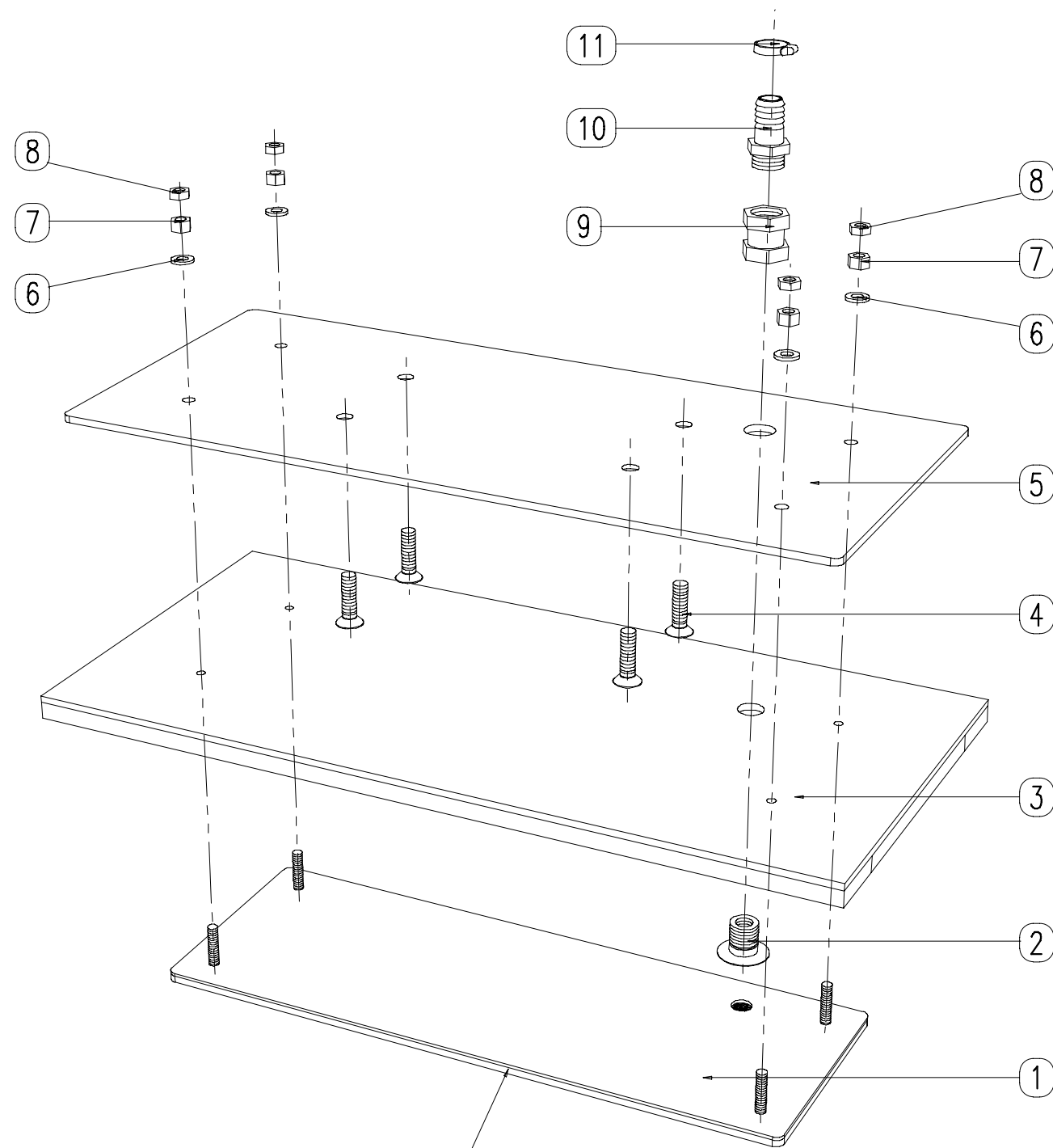


MODEL: VAM4PN/500 TK VERSATILE
MACHINE CODE: 00408108



- | | |
|---|--------------------|
| 1 - VAM PNEUMATIC DEVICE TANK | COD. 92000018 |
| 2 - PN ACCESSORY HOLDER PLATE | COD. 60000644PZ |
| 3 - M5x35 UNI 5933 - 10.9 ALLEN SCREW | COD. 9400030000001 |
| 4 - M10x20 UNI 5931 - 8.8 ALLEN SCREW | COD. 9400020000028 |
| 5 - A7 1/4 MALE PLUG | COD. 9300040000002 |
| 6 - A4 1/2 3/8 TAPERED MF REDUCTION | COD. 9300020000003 |
| 7 - MM A15 3/8 ELBOW | COD. 9300160000001 |
| 8 - 3/8 EUROPEAN CHECK VALVE | COD. 9300500000002 |
| 9 - 3/8 DRY VACUUM FILTER | COD. 9200300000001 |
| 10 - A2 3/8 3/8 TAPERED NIPPLE | COD. 9300000000002 |
| 11 - 3/8 15 HOSE NIPPLE | COD. 9300310000001 |
| 12 - 14 20 METAL SPIRAL PVC TUBE | COD. 9200350000001 |
| 12R - 14 20 RED METAL SPIRAL PVC TUBE | COD. 9200350000008 |
| 12V - 14 20 GREEN METAL SPIRAL PVC TUBE | COD. 9200350000009 |
| 13 - A7 3/8 MALE PLUG | COD. 9300040000003 |
| 14 - FFM A13 3/8 HEX HEAD | COD. 9300090000001 |
| 15 - LVM/5-K2BE VENTURIMETER | COD. 9200000000001 |
| 16 - A2 1/4 1/4 TAPERED NIPPLE | COD. 9300000000001 |
| 17 - 1/4 PRESSURE REDUCER | COD. 9100000000001 |
| 18 - A5 1/4 1/4 TAPERED MF EXTENSION | COD. 9300030000002 |
| 19 - M4x12 UNI 5931 - 8.8 ALLEN SCREW | COD. 9400020000049 |
| 20 - FMF A12 1/4 HEX HEAD | COD. 9300080000002 |
| 21 - MF 1/4 MINI-BALL | COD. 9300510000001 |
| 22 - M 1/4 QUICK CONNECTION | COD. 9300600000001 |
| 23 - 45° 8 ELBOW | COD. 9301260000007 |
| 24 - SELF-POWERED ALARM SYSTEM | COD. 9000500000101 |
| 25 - 5.3x10 UNI 6592 FLAT WASHER | COD. 9400060000002 |
| 26 - M5x10 UNI 5931 - 8.8 ALLEN SCREW | COD. 9400020000004 |
| 27 - 0604 90° ELBOW | COD. 9301140000001 |
| 28 - | COD. |
| 29 - A7 1/8 MALE PLUG | COD. 9300040000001 |
| 30 - A21 3/8 4-WAY DISTRIBUTOR | COD. 9300150000002 |
| 31 - M5 UNI 5587 NUT | COD. 9400040000002 |
| 32 - MF A10 3/8 3/8 ELBOW | COD. 9300060000003 |
| 33 - MF 3/8 MINI-BALL | COD. 9300510000002 |
| 34 - A4 3/8 1/4 TAPERED MF REDUCTION | COD. 9300020000001 |
| 35 - MF A10 1/4 1/4 ELBOW | COD. 9300060000002 |
| 36 - 0/-1 BAR 1/4 Ø63 MM VACUUM METER | COD. 9200500000001 |
| 37 - FMF A12 3/8 3/8 HEX HEAD | COD. 9300080000001 |
| 38 - 3/8 6 ELBOW | COD. 9301020000012 |
| 39 - RILSAN 4 6 YELLOW TUBE | COD. 9200360000008 |
| 40 - A2 3/8 1/2 TAPERED NIPPLE | COD. 9300000000003 |
| 41 - ABA 1320 CLIP | COD. 9300320000001 |
| 42 - STRAP | COD. |
| 43 - AIR-SUCKER CONNECTION KIT | COD. 9100000000000 |
| 44 - LYVIA 500M/AMP BATTERY CHARGER | COD. 9000500000002 |
| 45 - FEEDING ELECTRICAL CONNECTOR | COD. 9000500000017 |





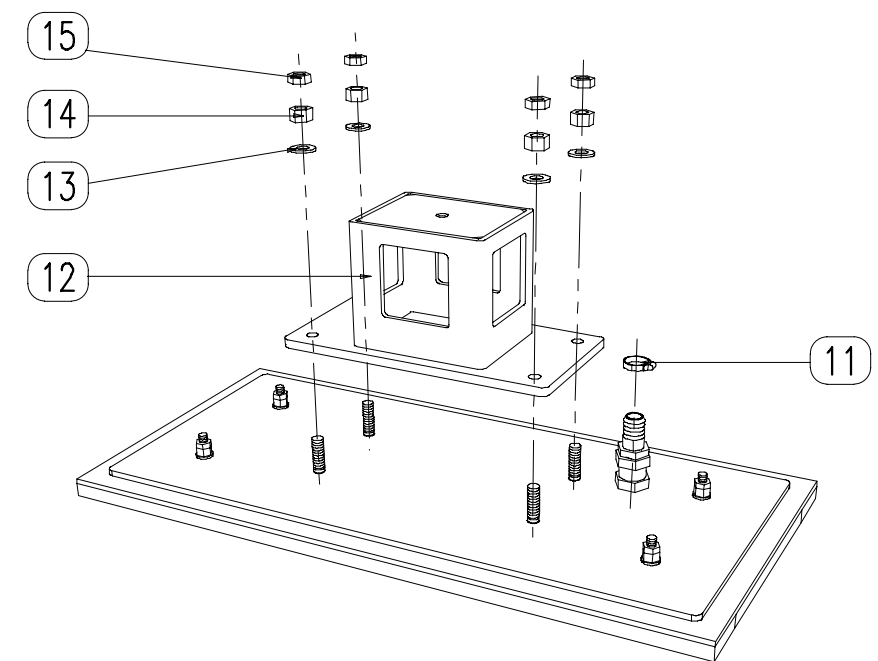
DIAMOND RUBBER ONLY
CODE 9200390000156

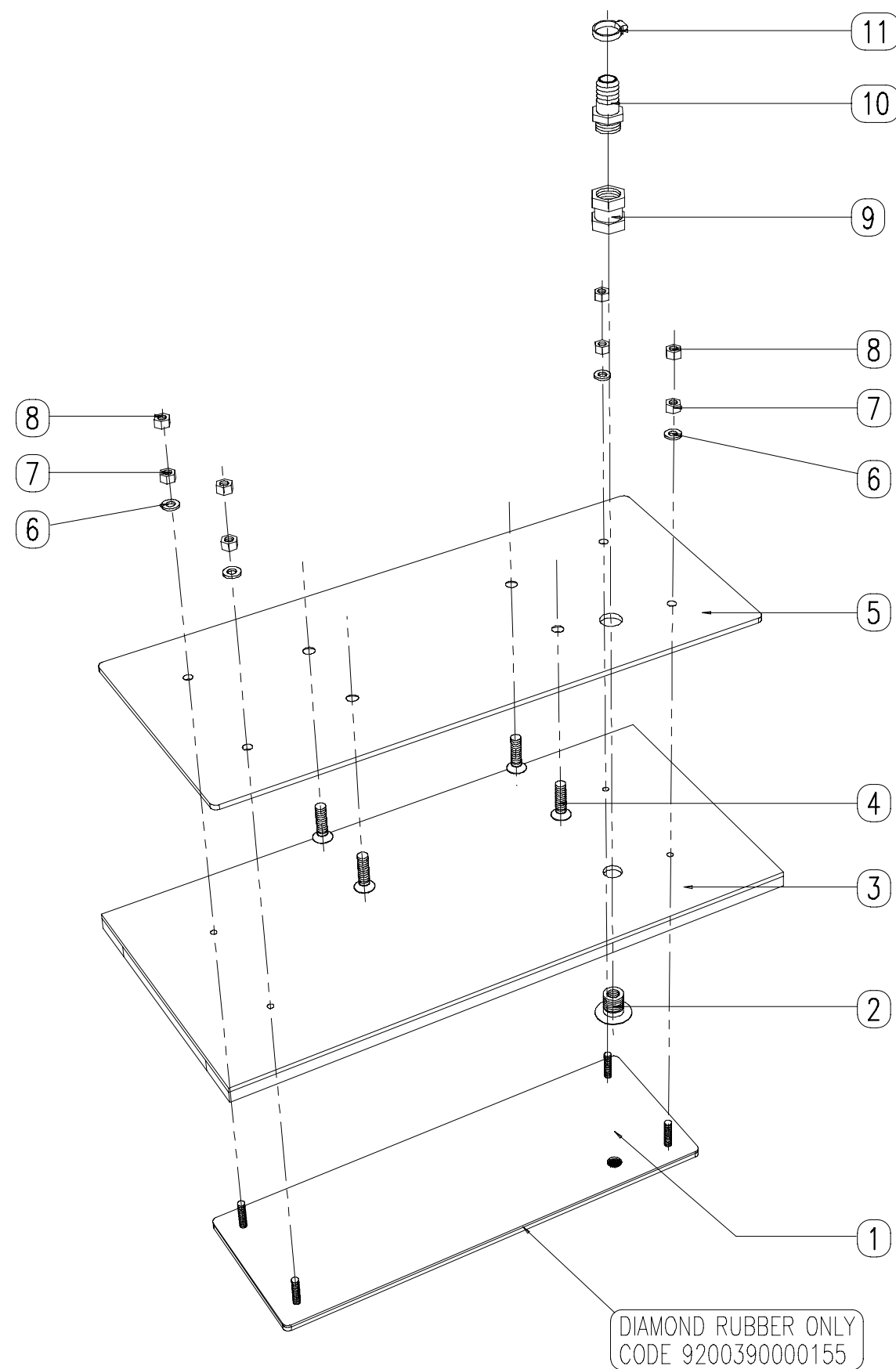
LEFT SUCTION PLATE CODE 62000599

- | | |
|---------------------------------------|--------------------|
| 1 - LEFT COUNTER-PLATE RUBBER | COD. 61200010 |
| 2 - 3/8 SUCTION SCREW | COD. 90000030 |
| 3 - LEFT PLATE SEAL | COD. 61200009 |
| 4 - M8x30 UNI 5933 - 10.9 ALLEN SCREW | COD. 9400030000007 |
| 5 - LEFT BASE PLATE | COD. 60000507 |
| 6 - 6.4x12.5 UNI 6592 FLAT WASHER | COD. 9400060000003 |
| 7 - M6 UNI 5587 NUT | COD. 9400040000003 |
| 8 - M6 UNI 5589 NUT | COD. 9400040000103 |
| 9 - A3 3/8 THREADED SLEEVE | COD. 9300010000003 |
| 10 - 3/8 15 HOSE NIPPLE | COD. 9300310000001 |
| 11 - ABA 1320 CLIP | COD. 9300320000001 |

LEFT SUCTION PLATE WITH SUPPORT CODE 62000599+S

- | | |
|----------------------------------|--------------------|
| 12 - 50 STD TUBE PLATE SUPPORT | COD. 62000024AZ |
| 13 - 8.4x17 UNI 6592 FLAT WASHER | COD. 9400060000004 |
| 14 - M8 UNI 5587 NUT | COD. 9400040000004 |
| 15 - M8 UNI 5589 NUT | COD. 9400040000104 |



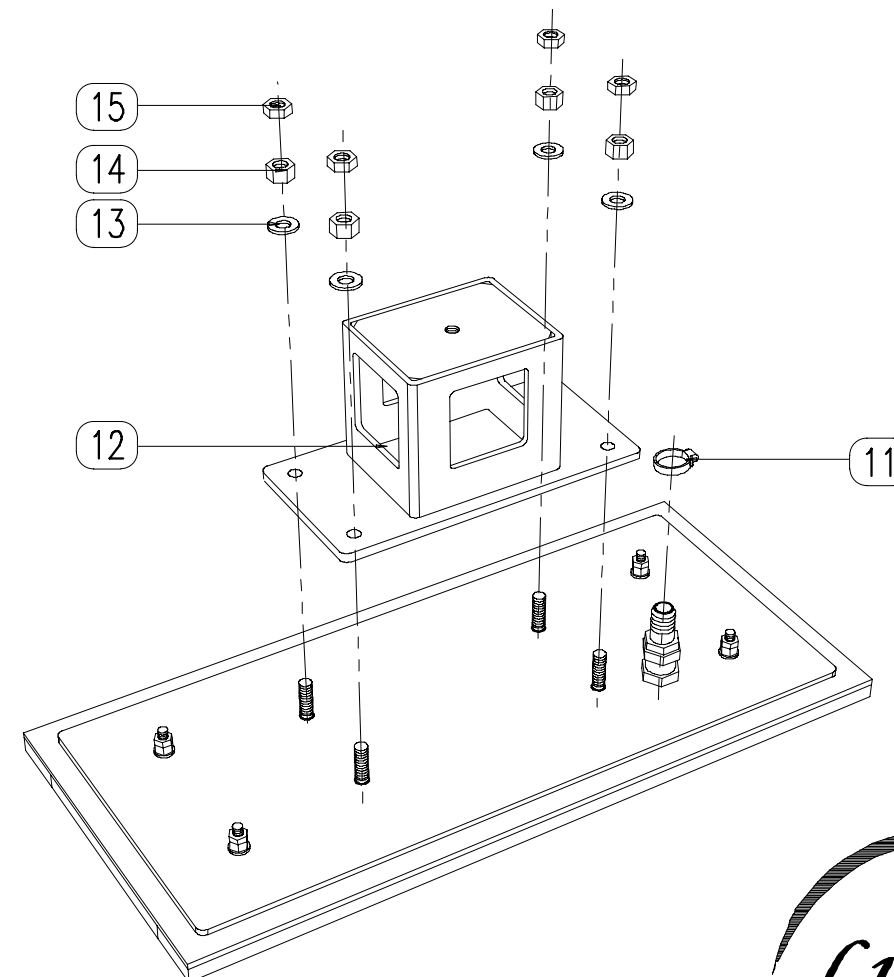


RIGHT SUCTION PLATE CODE 62000598

- | | |
|---------------------------------------|--------------------|
| 1 - RIGHT COUNTER-PLATE RUBBER | COD. 61200012 |
| 2 - 3/8 SUCTION SCREW | COD. 90000030 |
| 3 - RIGHT PLATE SEAL | COD. 61200011 |
| 4 - M8x30 UNI 5933 - 10.9 ALLEN SCREW | COD. 9400030000007 |
| 5 - RIGHT BASE PLATE | COD. 60000032 |
| 6 - 6.4x12.5 UNI 6592 FLAT WASHER | COD. 9400060000003 |
| 7 - M6 UNI 5587 NUT | COD. 9400040000003 |
| 8 - M6 UNI 5589 NUT | COD. 9400040000103 |
| 9 - A3 3/8 THREADED SLEEVE | COD. 9300010000003 |
| 10 - 3/8 15 HOSE NIPPLE | COD. 9300310000001 |
| 11 - ABA 1320 CLIP | COD. 9300320000001 |

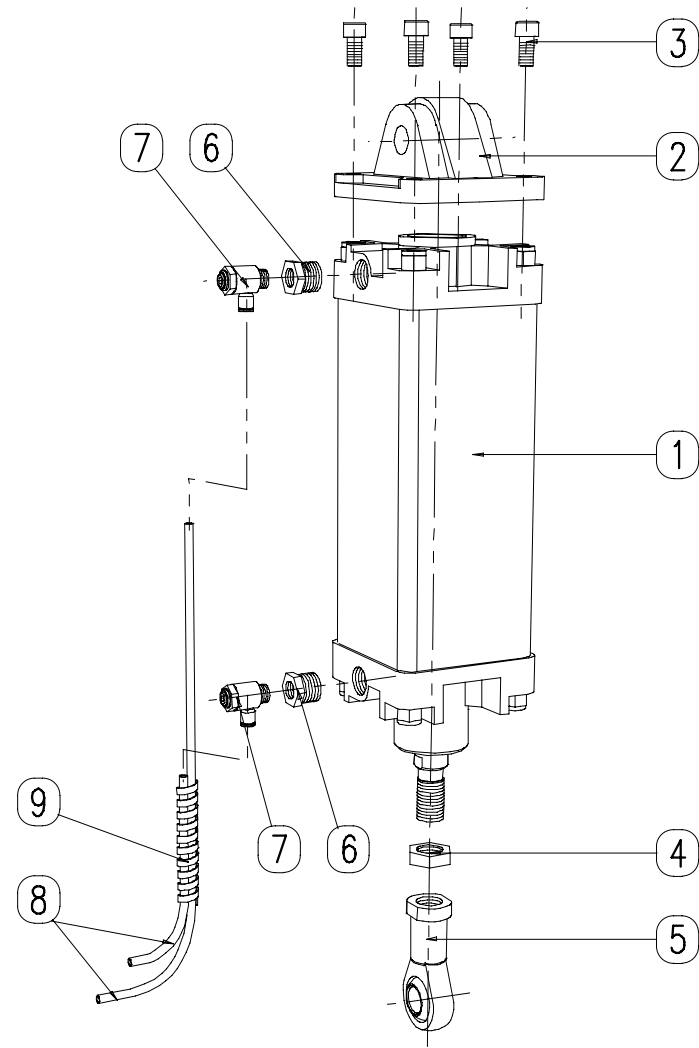
RIGHT SUCTION PLATE WITH SUPPORT CODE 62000598+S

- | | |
|----------------------------------|--------------------|
| 12 - 50 STD TUBE PLATE SUPPORT | COD. 62000024AZ |
| 13 - 8.4x17 UNI 6592 FLAT WASHER | COD. 9400060000004 |
| 14 - M8 UNI 5587 NUT | COD. 9400040000004 |
| 15 - M8 UNI 5589 NUT | COD. 9400040000104 |

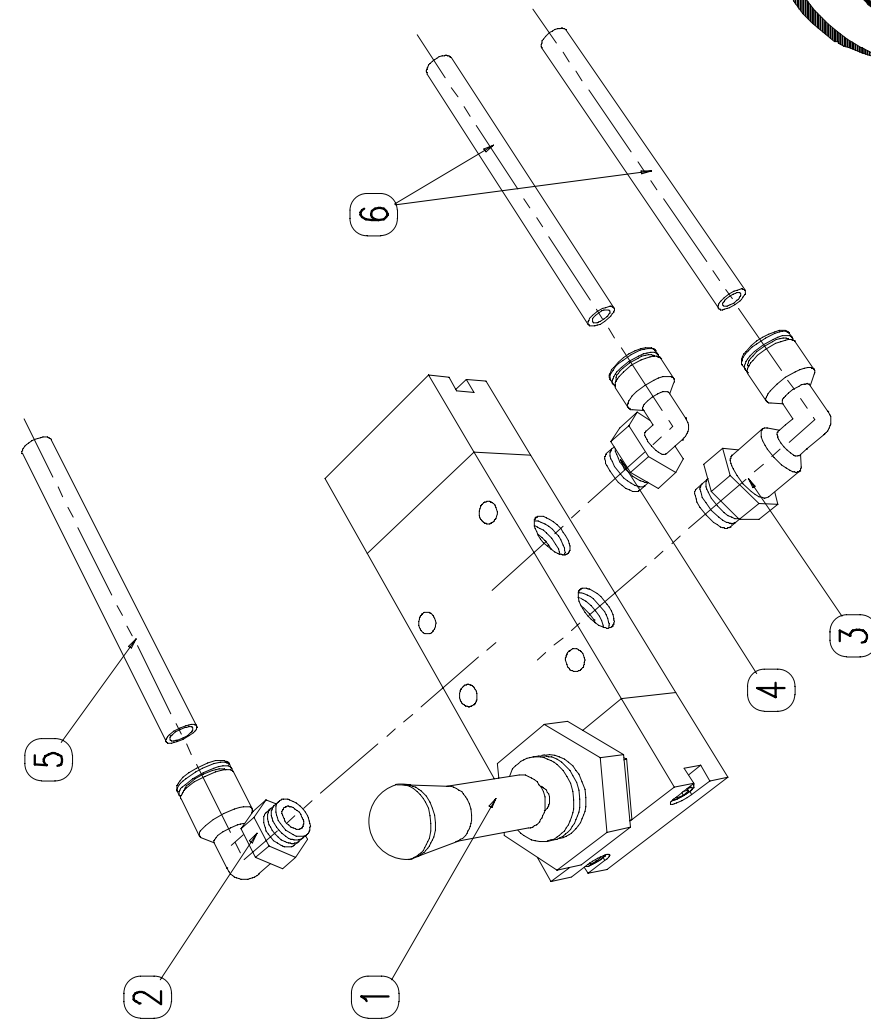




PNEUMATIC CYLINDER

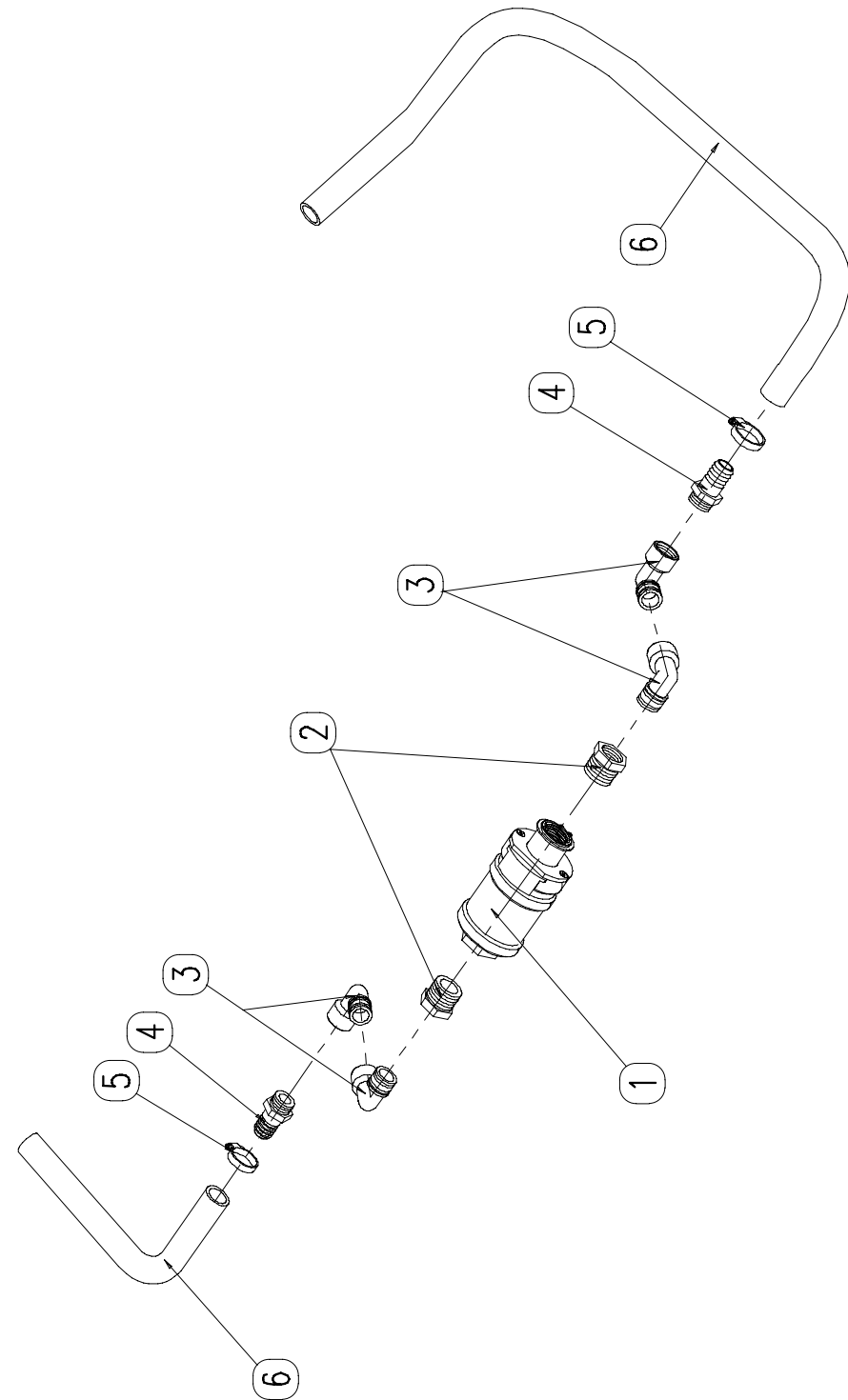


- | | |
|---------------------------------------|--------------------|
| 1 - Ø100 CYLINDER 200 MM STROKE | COD. 9100200000004 |
| 2 - Ø100 MALE ISO HINGE | COD. 9100210000002 |
| 3 - M10x30 UNI 5931 - 8.8 ALLEN SCREW | COD. 9400020000014 |
| 4 - M20x1.5 NUT | COD. 9100220000002 |
| 5 - BNF-20 JOINT HEAD | COD. 9100210000032 |
| 6 - 1/2 1/4 A4 TAPERED MF REDUCTION | COD. 9300020000002 |
| 7 - 1/4 6 FLOW REGULATOR | COD. 9301160000005 |
| 8 - RILSAN 4 6 RED TUBE | COD. 9200360000011 |
| 9 - SPIRALITE P3 | COD. 9300320000003 |



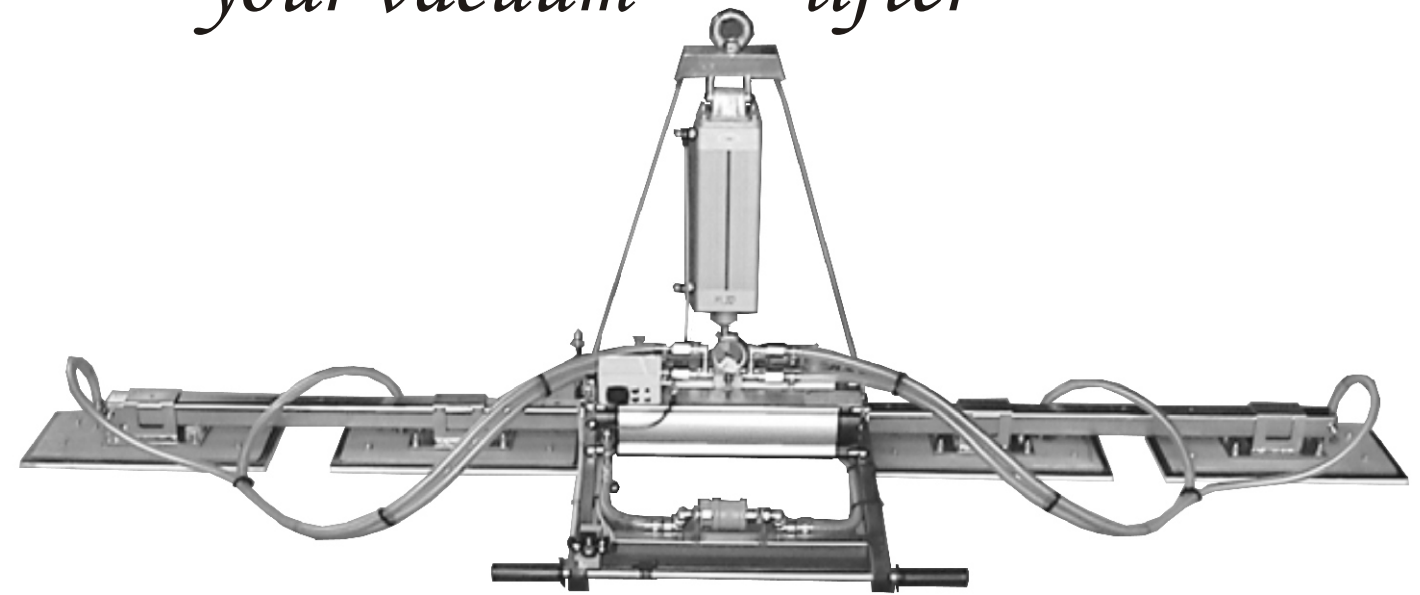
PART 22A
CYLINDER CONTROL VALVE

- | | |
|-------------------------|--------------------|
| 1 - 5/3-1/8 VALVE | COD. 9200200000016 |
| 2 - 1/8 8 ELBOW | COD. 9301020000014 |
| 3 - P 1/8 6 ELBOW | COD. 9301030000007 |
| 4 - 1/8 6 ELBOW | COD. 9301020000010 |
| 5 - RILSAN 8 6 RED TUBE | COD. 9200360000009 |
| 6 - RILSAN 6 4 RED TUBE | COD. 9200360000011 |



- 1 - 1/2 SLIDER VALVE
- 2 - 1/2 3/8 A4 TAPERED MF REDUCTION
- 3 - 3/8 3/8 A10 MF ELBOW
- 4 - 3/8 14 HOSE NIPPLE
- 5 - ABA 1320 CLIP
- 6 - 14 20 METAL SPIRAL PVC TUBE

- COD. 90000006
- COD. 93000200000003
- COD. 93000600000003
- COD. 93003100000001
- COD. 93003200000001
- COD. 92003500000001



GranQuartz

Tool-Free 1 (800) 458-6222
Fax 1 (800) 621-9771