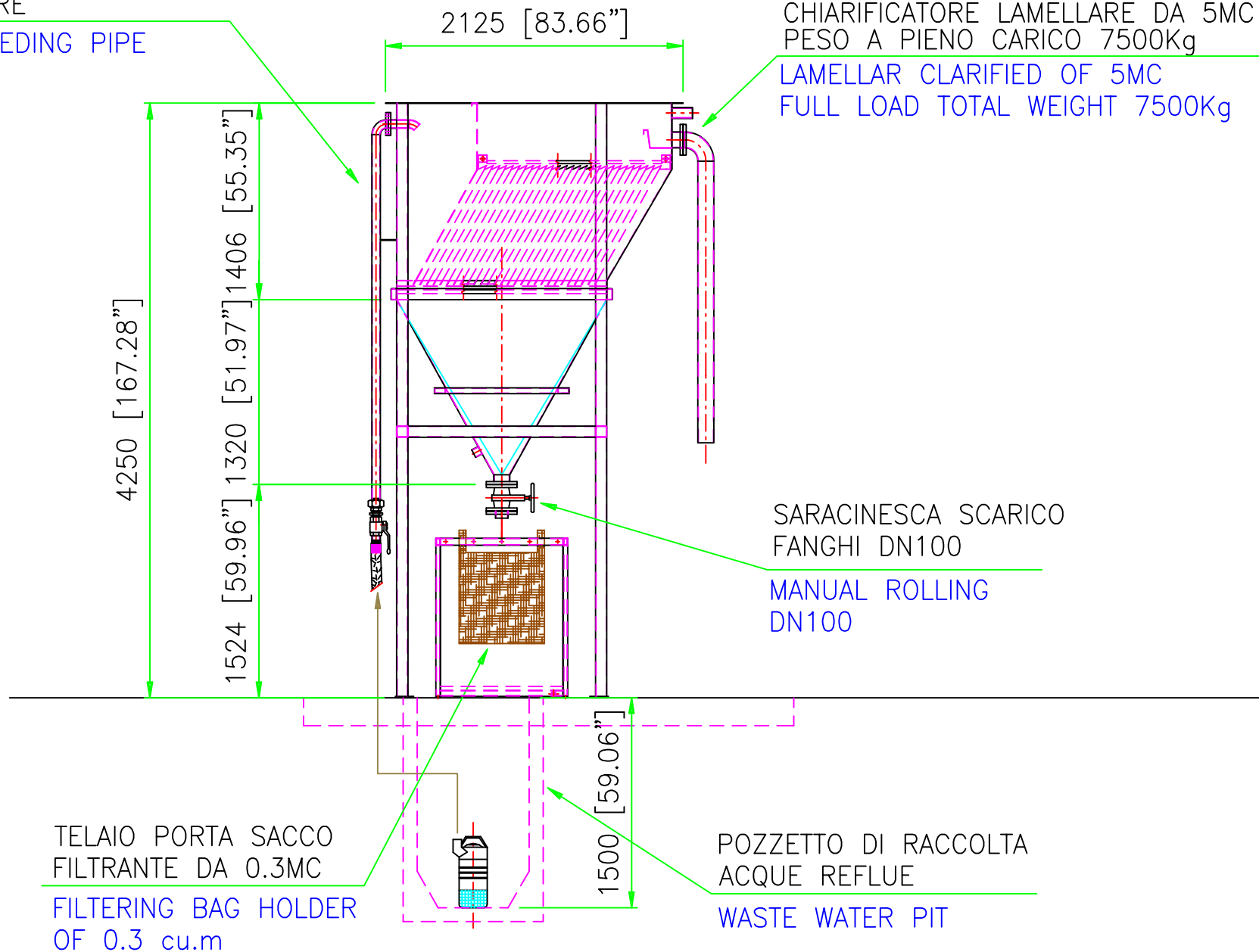


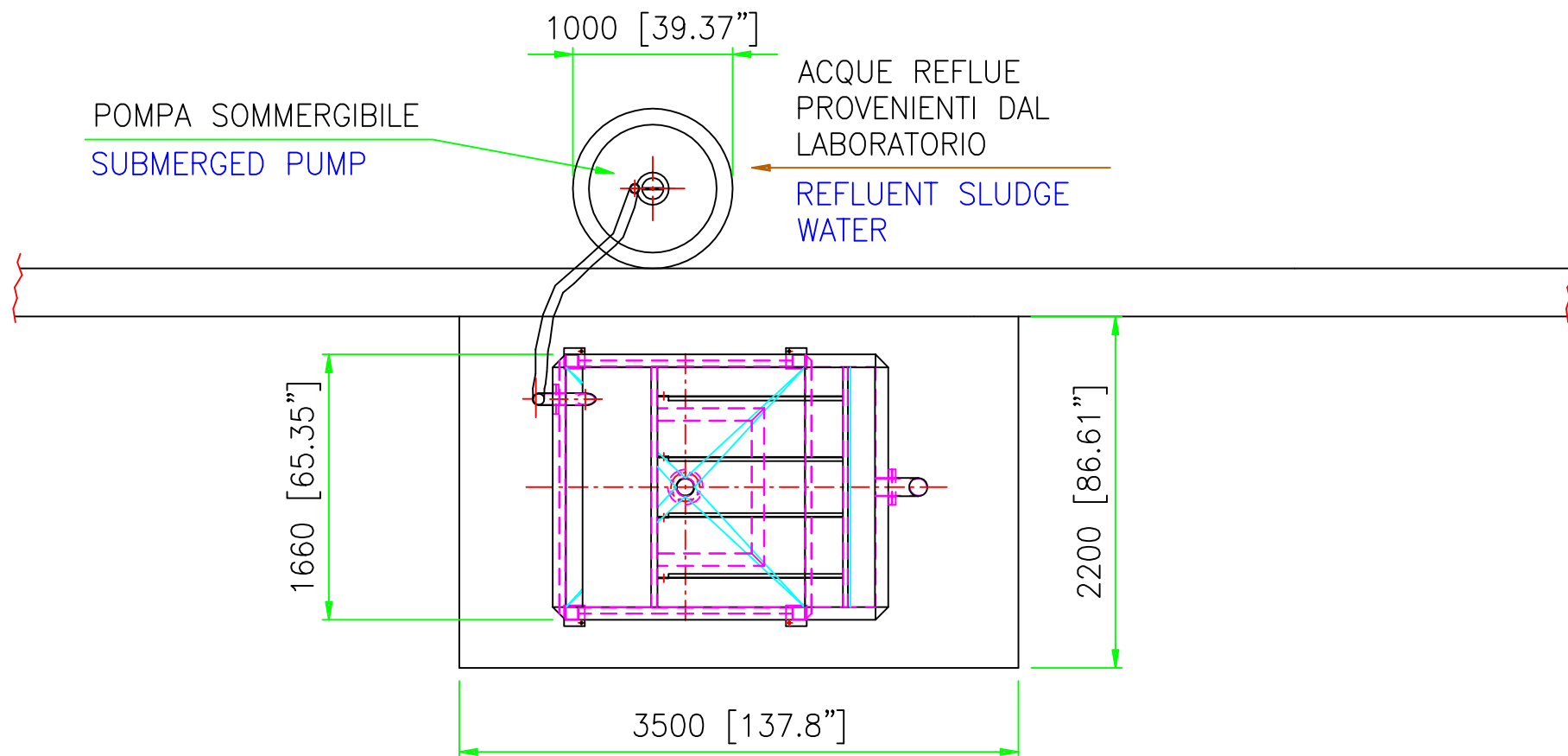
TUBAZIONE DI CARICO
CHIARIFICATORE
CLARIFIED FEEDING PIPE

CHIARIFICATORE LAMELLARE DA 5MC
PESO A PIENO CARICO 7500Kg
LAMELLAR CLARIFIED OF 5MC
FULL LOAD TOTAL WEIGHT 7500Kg




POMPA SOMMERSIBILE
SUBMERGED PUMP

ACQUE REFLUE
PROVENIENTI DAL
LABORATORIO
REFLUENT SLUDGE
WATER



- ▲ COMPRESSED AIR LINE RANGE 300 l/min [79 U.S.gal/min] PRESSION 10bar
- LINE WATER - RANGE 80 l/min [21 U.S.gal/min] PRESSION 3 bar
- ⚡ Q1: PANEL ELETTRIC 220V/60Hz - TOTAL POWER 0,75KW

	DISEGNO N.: 065.018.0	TIMBRO E FIRMA PER APPROVAZIONE	
	GRUPPO:		
DENOMINAZIONE:	DISEGNATORE: M.C.	SCALA: 1:40	
250 L/MIN [66 U.S.gal/min] LAMELLAR PLANT -STANDARD-			
MACC. TIPO:	DITTA: WEHA LLC (USA)	SOSTITUISCE IL:	SOSTITUITO DAL: