
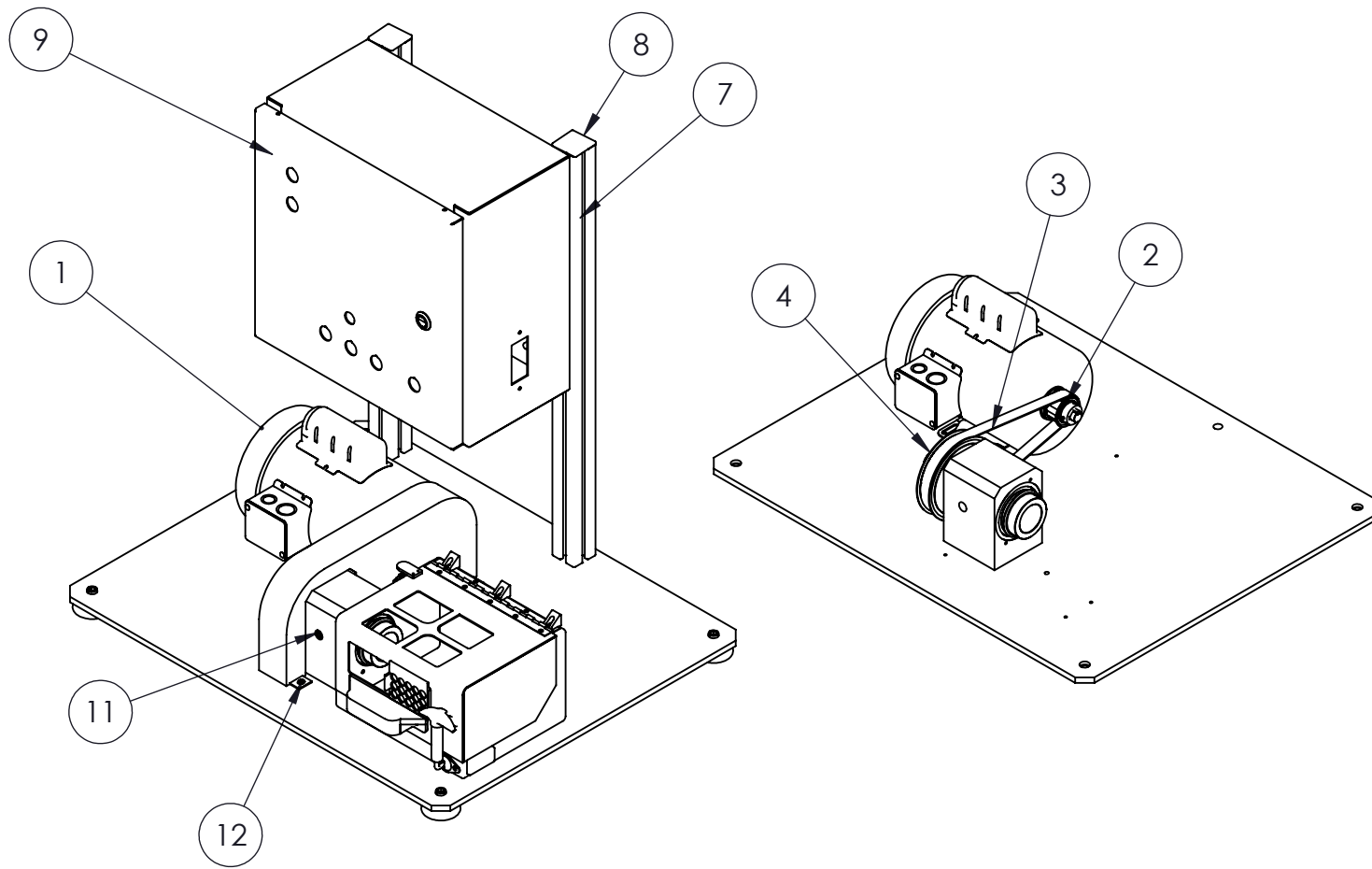
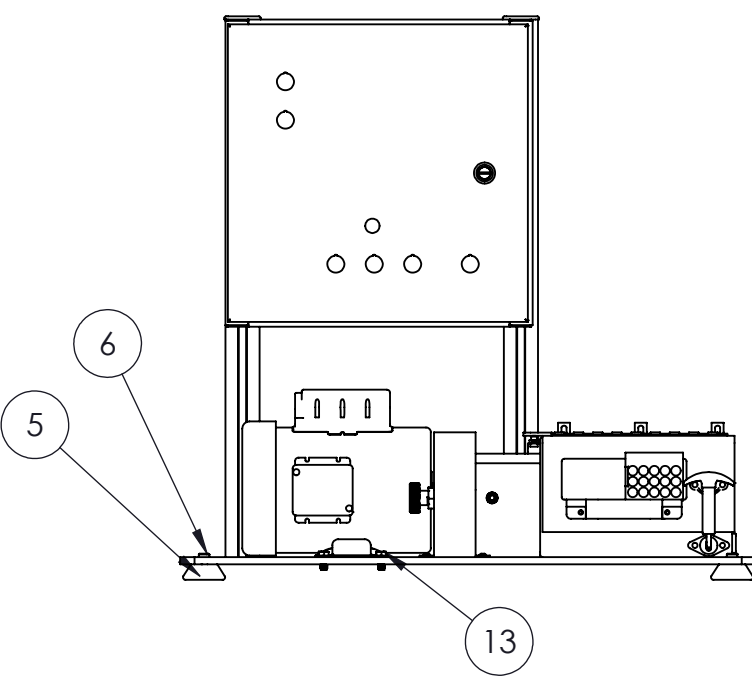


THIS DOCUMENT IS THE PROPERTY OF
KREMIN INC. THIS MATERIAL AND THE
INFORMATION ILLUSTRATED OR CONTAINED
HEREIN MAY NOT BE REPRODUCED, COPIED,
USED OR TRANSMITTED IN WHOLE OR IN
PART IN ANYWAY WITHOUT THE PRIOR
WRITTEN CONSENT OF KREMIN INC.

UNLESS OTHERWISE SPECIFIED DIMENSIONS ARE IN INCHES TOLERANCES ARE: XX .01" XXX .005" XXXX .0005" ANGLES: 1 PARTS TO BE FREE OF BURS BREAK ALL SHARP EDGES R.015 MACHINED SURFACES = 125 FINISH	DRAWN	DATE	 235 KEYSTONE WAY FRANKENMUTH, MI 48734	235 Keystone Way Frankenmuth, MI 48734		
	BP	7/31/2019		FINAL ASSEMBLY		
	CHECKED	DATE CHECKED	SIZE B			
	QA		MFG		DWG NO. DRM-001_ASM	REV
APPROVED		SCALE		HEAT TREAT	SHEET 1 OF 5	
CONFIDENTIAL						



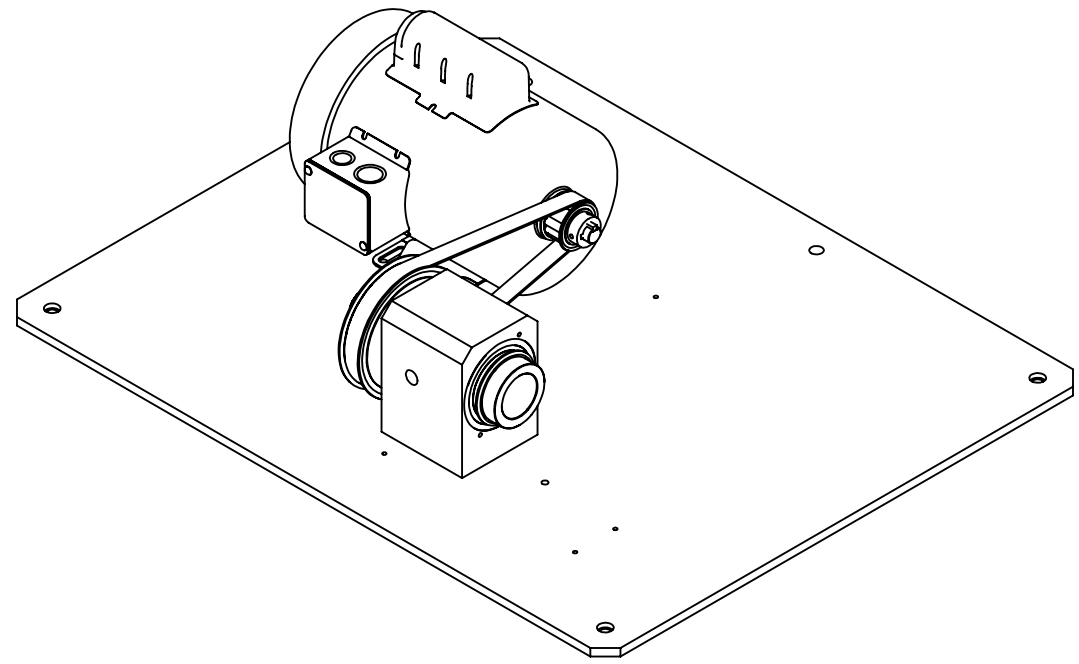
ITEM NO.	PART NUMBER	DESCRIPTION	QTY.
1	USMT1P1A	1HP 3450 RMP Standard Electric Motor	1
2	HI_ATPK14L075-B-NUG_a	Smaller Misumi Pulley	1
3	TBN300L075_info_1_14_14	Misumi Timing Belt 3/4"w X 28.50"L76T	1
4	_ATPK40L075_A_NUS	Larger Misumi Pulley	1
5	60855K71	Vibration Dampening Mount	4
6	91251A619	3/8"-16 Thread Size, 1/2" Long	4
7	45x45H T Slot	Electronic Panel T-Slot	2
8	FramingTechnology-EC4545	T-Slot Endcap	2
9	kre4-16el1608lp (Electronic Panel)	Electronic Panel	1
10	FramingTechnology-TB1025	T-Slot & Nut	4
11	44605K232	Steel, Plug with Hex Drive, 1/4 NPT	1
12	92949A263	10-32 Thread Size, 3/8" Long BHCS	3
13	92865A581	5/16"-18 Thread Size, 3/4" Long Hex C/S	4
14	91251A196	8-32 Thread Size, 5/8" Long SHCS	2
15	92220A263	1/2"-13 Thread Size, 1-1/2" Long, Low Profile SHCS	2
16	NW16002	1/8" x 5/16" x 3/4" Washer	4
17	5C25KBCS	5/40 Thread Size, 1/4" Long BHCS	2
18	91253A624	3/8"-16 Thread Size, 1" Long FHCS	4



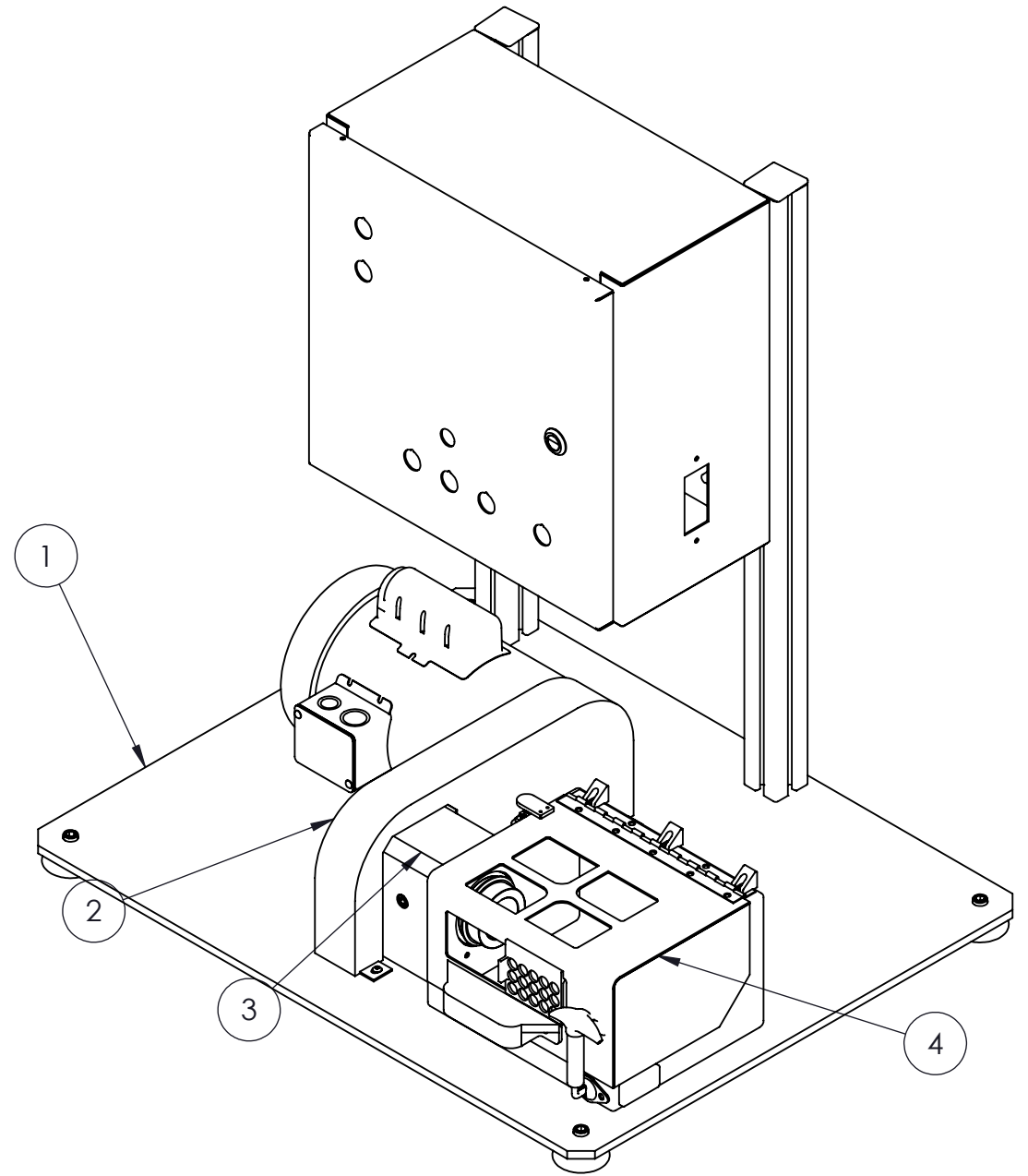
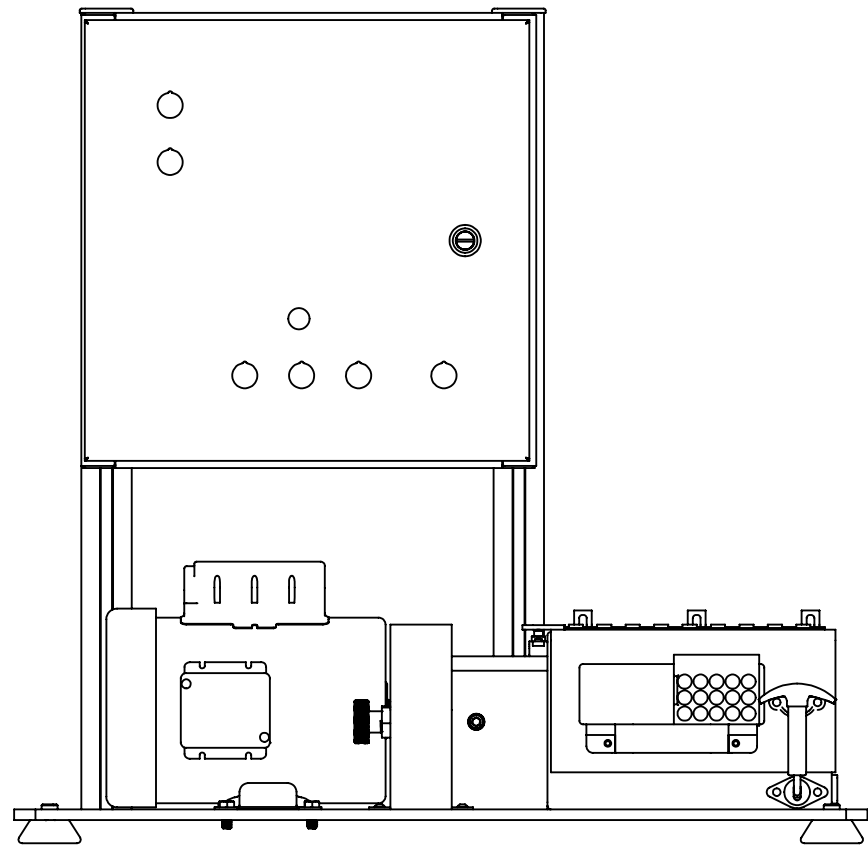
THIS DOCUMENT IS THE PROPERTY OF KREMIN INC. THIS MATERIAL AND THE INFORMATION ILLUSTRATED OR CONTAINED HEREIN MAY NOT BE REPRODUCED, COPIED, USED OR TRANSMITTED IN WHOLE OR IN PART IN ANYWAY WITHOUT THE PRIOR WRITTEN CONSENT OF KREMIN INC.

UNLESS OTHERWISE SPECIFIED DIMENSIONS ARE IN INCHES TOLERANCES ARE: XX .01" XXX .005" XXXX .0005" ANGLES: ° 1 PARTS TO BE FREE OF BURS BREAK ALL SHARP EDGES R.015 MACHINED SURFACES = 125 FINISH	DRAWN BP	DATE 7/31/2019
	CHECKED	DATE CHECKED
	QA	
	MFG	
CONFIDENTIAL	APPROVED	


		235 Keystone Way Frankenmuth, MI 48734	
PURCHASED COMPONENTS			
SIZE B	MAT'L	DWG NO. DRM-001_ASM	REV
SCALE	HEAT TREAT	SHEET 2 OF 5	

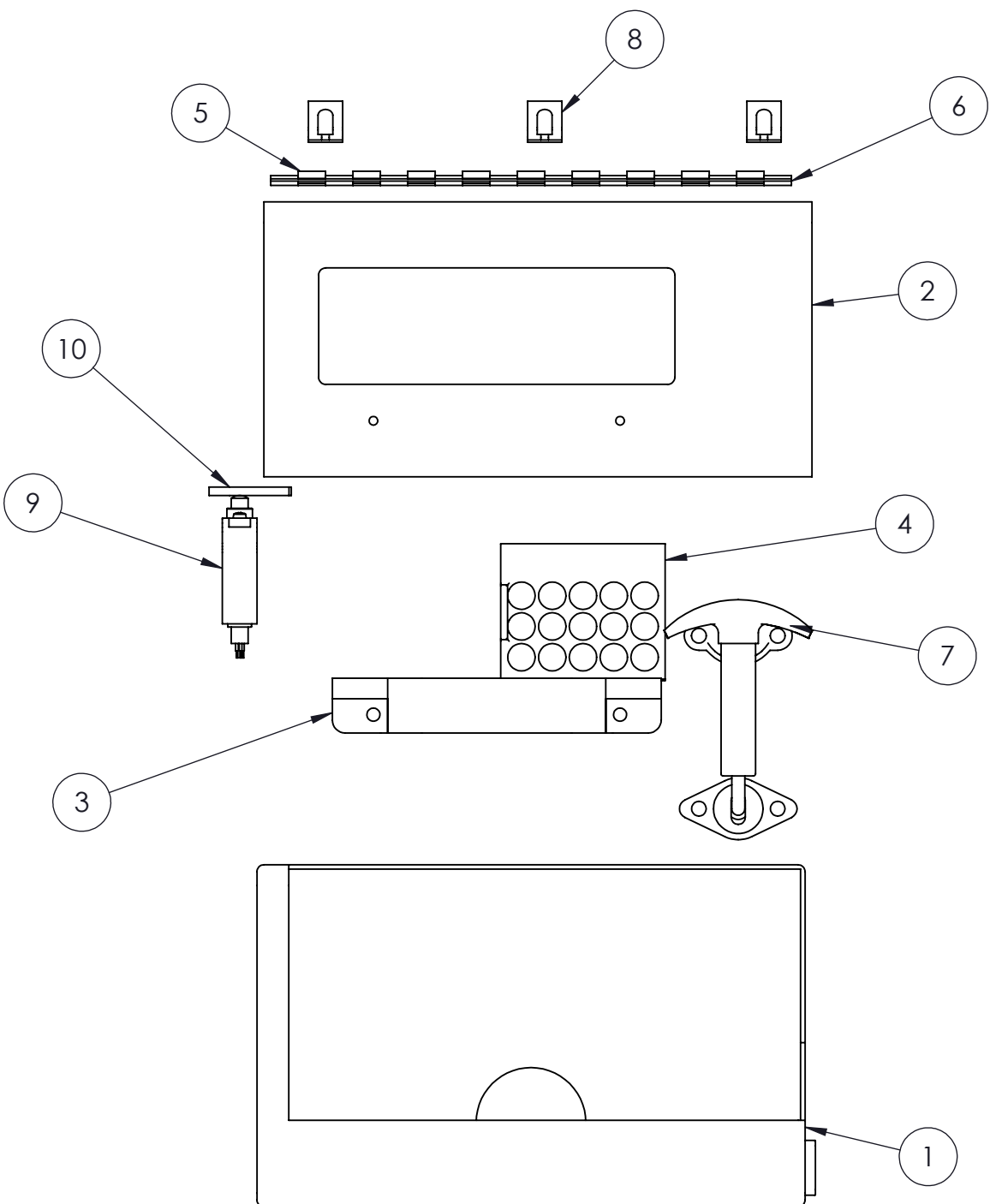


ITEM NO.	PART NUMBER	DESCRIPTION	QTY.
1	DRM-001_001-Mill	Base Plate	1
2	DRM-001_011	Belt Cover	1
3	Spindle Assembly	Spindle Assembly	1
4	Dressing Machine Cover Assembly	Guard Assembly	1

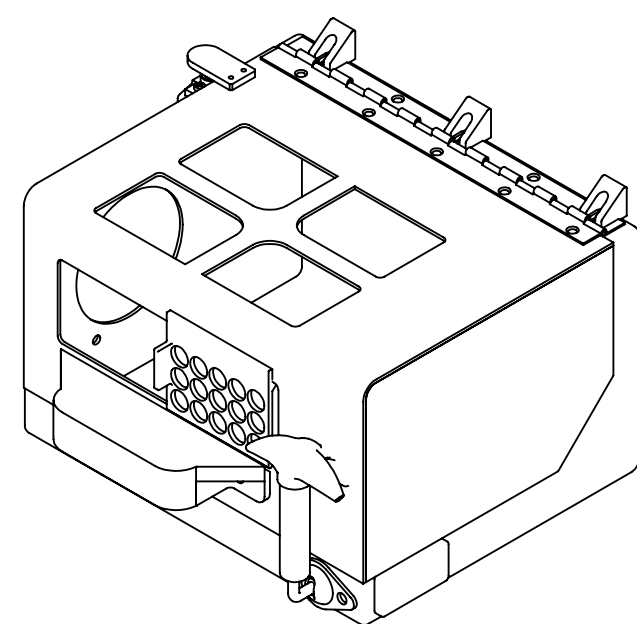


THIS DOCUMENT IS THE PROPERTY OF KREMIN INC. THIS MATERIAL AND THE INFORMATION ILLUSTRATED OR CONTAINED HEREIN MAY NOT BE REPRODUCED, COPIED, USED OR TRANSMITTED IN WHOLE OR IN PART IN ANYWAY WITHOUT THE PRIOR WRITTEN CONSENT OF KREMIN INC.


UNLESS OTHERWISE SPECIFIED DIMENSIONS ARE IN INCHES TOLERANCES ARE: XX .01" XXX .005" XXXX .0005" ANGLES: 1° PARTS TO BE FREE OF BURS BREAK ALL SHARP EDGES R.015 MACHINED SURFACES = 125 FINISH	DRAWN BP	DATE 7/31/2019	 235 KEYSTONE WAY FRANKENMUTH, MI 48734	235 Keystone Way Frankenmuth, MI 48734		
	CHECKED	DATE CHECKED		MANUFACTURED COMPONENTS		
	QA		SIZE B			MAT'L
	CONFIDENTIAL	APPROVED		SCALE	HEAT TREAT	SHEET 3 OF 5



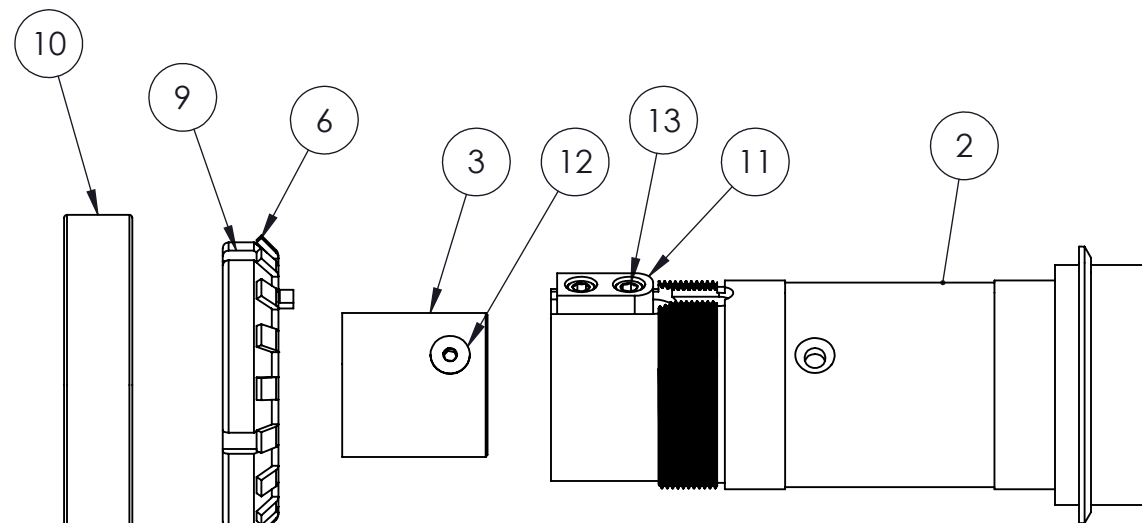
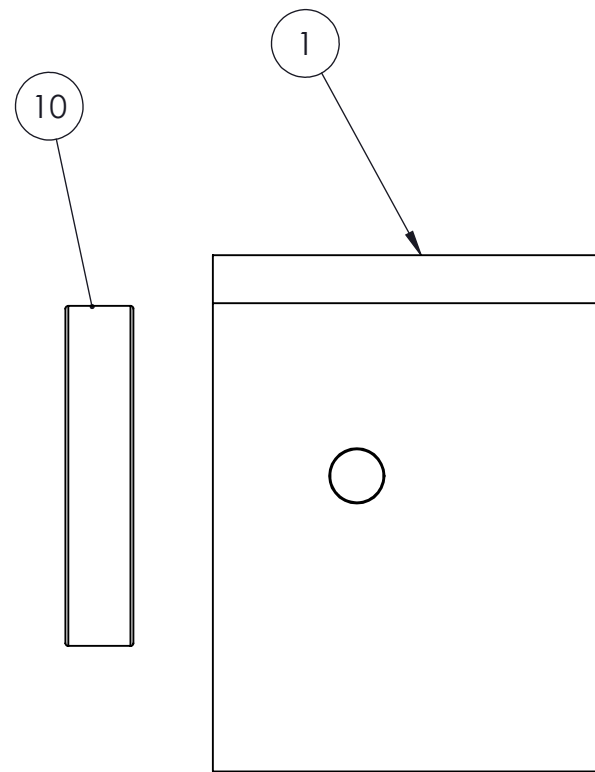
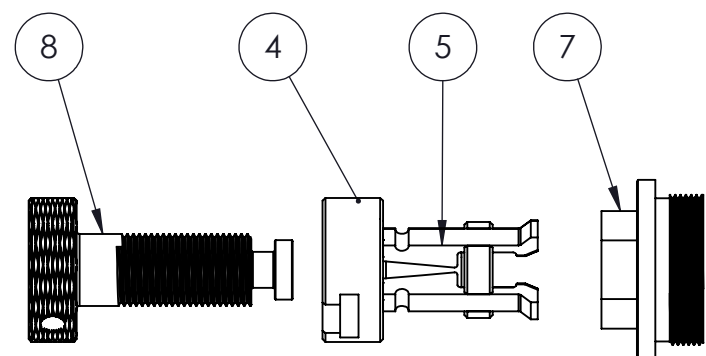
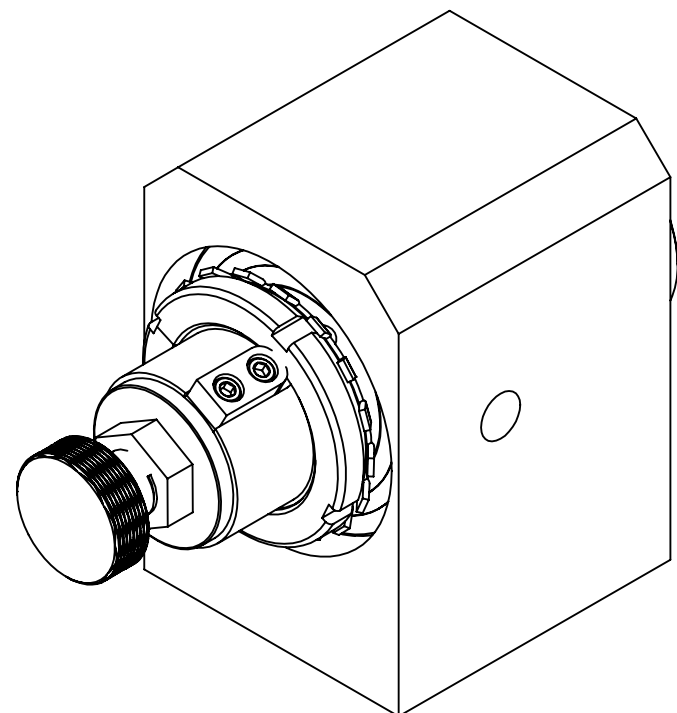
ITEM NO.	PART NUMBER	DESCRIPTION	QTY.
1	DRM-001_012	Guard Lower	1
2	DRM-001_013	Cover	1
3	DRM-001_018	Cover Handle	1
4	DRM-001_020	Hand Guard	1
5	12075A200-1	Piano Hinge	1
6	12075A200-2	Piano Hinge	1
7	1344A240	Spring Loaded Latch	1
8	DRM-001_021	Door Stop	3
9	Door Switch (AEM2G11Z11-3 Switch)	Door Switch	1
10	DRM-001_019	Switch Landing	1
11	91251A196	8-32 Thread Size, 5/8" Long SHCS	2



THIS DOCUMENT IS THE PROPERTY OF KREMIN INC. THIS MATERIAL AND THE INFORMATION ILLUSTRATED OR CONTAINED HEREIN MAY NOT BE REPRODUCED, COPIED, USED OR TRANSMITTED IN WHOLE OR IN PART IN ANYWAY WITHOUT THE PRIOR WRITTEN CONSENT OF KREMIN INC.

UNLESS OTHERWISE SPECIFIED DIMENSIONS ARE IN INCHES TOLERANCES ARE: XX .01" XXX .005" XXXX .0005" ANGLES: 1° PARTS TO BE FREE OF BURS BREAK ALL SHARP EDGES R.015 MACHINED SURFACES = 125 FINISH	DRAWN	DATE	 235 Keystone Way Frankenmuth, MI 48734		
	BP	7/31/2019			
	CHECKED	DATE CHECKED	GUARD ASSEMBLY		
	QA				
MFG		SIZE	MAT'L	DWG NO.	REV
APPROVED		B		DRM-001_ASM	
CONFIDENTIAL		SCALE	HEAT TREAT	SHEET 4 OF 5	

REVISIONS			
REV.	DESCRIPTION	DATE	APPROVED



ITEM NO.	PART NUMBER	DESCRIPTION	QTY.
1	DRM-001_002	Spindle Housing	1
2	DRM-001_003	Spindle	1
3	DRM-001_005	Jaw Retainer	1
4	DRM-001_006	Jaw Actuator	1
5	DRM-001_007	Jaw	4
6	#W-11	WHITTET-HIGGINS LOCK WASHER	1
7	DRM-001_008	Nut	1
8	DRM-001_009	Lock Screw	1
9	#N-11	WHITTET-HIGGINS NUT	1
10	#6011RSJEM	SKF SINGLE ROW DEEP GRV 1SEAL BBG	2
11	DRM-001_010	Key	1
12	92210A295	#10-32 x 7/16 FHCS	2
13	91251A901	#10-32 x 1/4 SHCS	2
14	1201T51	O-RINGS CHEM-RESISTANCE	1

THIS DOCUMENT IS THE PROPERTY OF KREMIN INC. THIS MATERIAL AND THE INFORMATION ILLUSTRATED OR CONTAINED HEREIN MAY NOT BE REPRODUCED, COPIED, USED OR TRANSMITTED IN WHOLE OR IN PART IN ANYWAY WITHOUT THE PRIOR WRITTEN CONSENT OF KREMIN INC.

UNLESS OTHERWISE SPECIFIED
DIMENSIONS ARE IN INCHES
TOLERANCES ARE:
XX .01"
XXX .005"
XXXX .0005"
ANGLES: 1°
PARTS TO BE FREE OF BURS
BREAK ALL SHARP EDGES R.015
MACHINED SURFACES = 125 FINISH

CONFIDENTIAL

DRAWN BP	DATE 7/31/2019
CHECKED	DATE CHECKED
QA	
MFG	
APPROVED	



235 Keystone Way
Frankenmuth, MI 48734

Spindle Assembly Exploded View

SIZE B	MAT'L	DWG NO. DRM-001_ASM	REV
SCALE	HEAT TREAT	SHEET 5 OF 5	