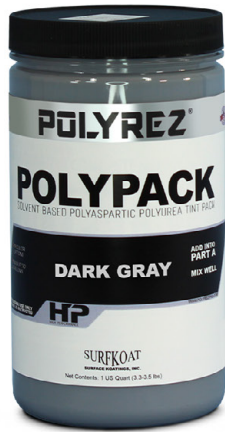


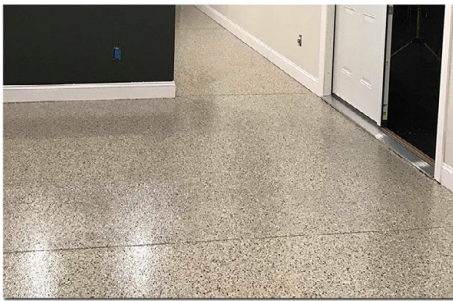
POLYPACK

KOLOUR KOAT™ TINT PACK FOR POLYKOAT GL™ POLYASPARTIC



Polypack is a high solids, concentrated, solvent based tint system specially formulated for PolyKoat GL Polyaspartic Polyurea. Polypack is formulated with high quality, ultra fine particle pigments that easily disperse in PolyKoat GL. Polypack is a superior choice to obtain a superb solid colored finish in the PolyKoat GL Polyaspartic line.

Specifications / Compliances



KEY FEATURES & TYPICAL BENEFITS

- 14 brilliant standard colors to choose from. (See *Kolour Koat™* color chart) *Includes black & white
- Very economical, easy and decorative way to coat a variety of concrete substrates.
- Easily disperses into PolyKoat GL and many other polyaspartic coatings.
- Very easy way to create a beautiful & durable, solid color concrete surface.
- Try in SurfKoat's *PolyKoat GL 80* or *PolyKoat GL 70* polyaspartic.

Typical Properties & Technical Information

PROPERTY	VALUE
Solids/Active Content, Percentage by weight	N/A
Pot Life	Depends on polyaspartic used
Dry Time - Tack Free	Depends on polyaspartic used
Dry Time - Foot Traffic	Depends on polyaspartic used
Dry Time - Heavy Traffic	Depends on polyaspartic used
Re-Coat Time Window	Depends on polyaspartic used
Application Temperature	50° F - 80° F
VOC (Volatile Organic Compound) Content	N/A
Appearance - Dry	Tinted and Medium/High Gloss

Information above is based on lab temperatures of 70° - 72°F at 50% RH. Using this product outside these conditions may affect the accuracy of the information above. Always test prior to use!

ALWAYS REFER TO SDS & READ FULL TECH DATA SHEET AND WARRANTY INFORMATION PRIOR TO USE.

RECOMMENDED APPLICATIONS

- Auto Service Centers
- Warehouses
- Laboratories
- Aircraft Hangars
- Cafeterias
- Garages
- Many other concrete surfaces where a solid color polyaspartic is desired.

APPLICATION INSTRUCTIONS

SURFACE PREP: Concrete surface must be clean and free of all contaminants and water. Do not apply if rain is forecast within 24 hours. If moisture is present or if the surface is not clean and free of all contaminants, the sealer may have white spots and have premature delamination and failure.

Review the technical data and SDS for the chosen polyaspartic prior to use for surface prep instructions, application instructions, coverage rates and limitations.

Substrate and air temperature must be no less than 40°F and not exceed 80°F. If applied outside these limits the sealer may not achieve adequate film formation and may have excessive air entrapment, bubbles, blushing or hazing. Note that in direct sunlight, substrate temperature can exceed 150°F which can cause extreme bubbling issues.

MIXING: Mix desired amount in approved polyaspartic Part A for 1-2 minutes using a squirrel mixer at a low speed to avoid introducing air to the product prior to mixing parts A & B. Material may separate during long term storage. Remix as needed.

USAGE RATE: Solid Opaque Finish: 9-16 oz. per gallon is suggested for a solid, opaque finish.
*Usage rates are suggested amounts only! Due to varying polyaspartic compositions, substrates, surface texture, porosity and desired look a test area is recommended to achieve desired results.

APPLICATION: Review the technical data and MSDS for the chosen polyaspartic prior to use for surface prep instructions, application instructions, coverage rates and limitations.

FOR PERSONAL PROTECTION USE GLOVES, GOGGLES, AND RESPIRATORS.

CAUTION: Do not add too much color! Apply a test area prior to job application for desired appearance. Over pigmentation may cause color float or streaking, especially in the darker colors! Do not allow to puddle! The average usage is 9-16 oz. gallon of material for most opaque applications. For lighter colors it may take more and darker colors may take less depending on the application as well as the composition of the polyaspartic.

Check Polypack for compatibility with competitors' polyaspartic prior to use!

PLEASE NOTE: It is always recommended to test the product in a small, inconspicuous area (on the same concrete substrate) for desired results prior to application. Coverage rates may vary for all coatings and substrates depending on porosity, density, texture etc. When applying, do not exceed 400 sq. ft. per gallon. Applying too thin of a coating may cause inadequate film formation or performance expectations may be limited. **DO NOT USE ON BRICK.**

PLEASE NOTE: Applying material outside the suggested parameters may result in product failure. It is always recommended to test the product in a small, inconspicuous area (on the same concrete substrate) for desired results prior to application. Coverage rates may vary for all coatings and substrates depending on porosity, density, texture etc. When applying, adhere to suggested coverage rates. Applying too thin of a coating may cause inadequate film formation, limited performance expectations and/or undesirable finish. Applying too thick may result to bubbling, hazing, etc. **DO NOT USE ON BRICK.**

COF WARNING: OSHA and the American Disabilities Act (ADA) have now set enforceable standards for slip-resistance on pedestrian surfaces. The current coefficient of friction required by ADA is .6 on level surfaces and .8 on ramps. Surface Koatings, Inc. recommends the use of slip-resistant aggregate in all coatings or flooring systems that may be exposed to wet, oily or greasy conditions. It is the contractor and end users' responsibility to provide a flooring system that meets current safety standards. Surface Koatings, Inc. nor its sales agents will be responsible for injury incurred in a slip and fall accident. For interior floors subjected only to foot traffic, Cherry Surf-Wax may be used as an acceptable slip-resistant coating as it meets requirements for ASTM D2047.

PRECAUTIONS AND LIMITATIONS

- This product will not freeze during storage, however, allow temperature to rise to 50°F prior to application.
- All HVAC ventilation ducts should be somehow blocked prior to application so solvent fumes are not distributed.
- If using indoor, use proper ventilation while applying and for hours after application to ensure fumes are removed.
- It is not recommended to apply product over carpet, tile, or other types of floor adhesives.
- This product performs best when applied as one or two medium-light coats, not one heavy coat.
- Please be aware that this product when cured may be slippery when wet. An anti-slip additive, such as Surf-Grip, can be added to reduce slip hazards.
- This product is not resistant to brake fluid, gasoline, and many similar products.
- It is not recommended to thin product. Improper thinning may cause sealer to delaminate in a short time frame.
- This product may darken the surface of many new and existing concrete slabs. Test prior to use.
- Follow the instructions for the polyaspartic that is to be used for application guidelines.
- SOLVENT VAPORS ARE HEAVIER THAN AIR AND MAY TRAVEL ALONG THE GROUND OR MAY BE MOVED BY VENTILATION AND IGNITED BY PILOT LIGHTS, OTHER FLAMES, SPARKS, HEATERS, SMOKING, ELECTRIC MOTORS, STATIC DISCHARGE, OR OTHER IGNITION SOURCES AT LOCATIONS DISTANT FROM MATERIAL HANDLING POINT.

CLEAN-UP: Use xylene. Dispose of containers in accordance with local, state and federal regulations.

PRODUCT REMOVAL: Refer to polyaspartic technical data sheet.

SHELF LIFE: Up to one year from manufacture date in its original, unopened container stored at room temperature.

PACKAGING: Available in 1 quart containers.

Always read all technical information, label and SDS prior to use. This information can be found online or by calling customer service at the number below.

Surface Koatings, Inc. warrants our products to be of good quality, free of defects and will conform with our published specifications in force on the date of acceptance of the order. As the exclusive remedy for breach of this warranty, we will replace defective materials. Ninety days after Surface Koatings, Inc. has shipped the products, all our warranty and other duties with respect to the quality of the materials delivered shall conclusively be presumed to have been satisfied, all liability therefore terminates, and no action for breach of any said duties may thereafter be commenced. No warranty is expressed or implied as to the length of life of this product, or merchantability or fitness. Liability, if any, is limited to the purchase price of the material. Under no circumstances will Surface Koatings, Inc. be liable for a consequential damage to anyone in excess of the purchase price of the products.